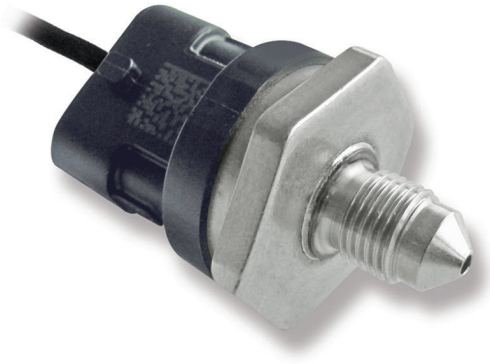




# Pressure Sensor Fluid PSC-260



- ▶ **Absolute fluid pressure measurement**
- ▶ **0 to 260 bar**
- ▶ **For gasoline, Diesel, oil or brake fluid**
- ▶ **Robust and compact design**
- ▶ **High robustness against vibrations**

The PSC-260 is specially designed to measure absolute pressure in gasoline direct injection applications. This sensor is also compatible with other kind of fluids e.g. Diesel, engine oil, transmission oil or brake fluid.

The sensor uses a thin layer technique to achieve high accuracy pressure measurements. The stainless steel measuring cells with piezoresistive bridges are hermetically welded with stainless steel pressure ports. The internal reference ensures ambient pressure independent measurements.

The main benefits of this sensor are its high accuracy, its wide measurement range and its robust and compact design.

## Application

Application	0 to 260 bar (a)
Pressure reference type	absolute
Max. pressure	320 bar
Operating temp. range	-40 to 130°C (140°C)
Media temp. range	-40 to 130°C (140°C)
Storage temp. range	-30 to 60°C
Max. vibration	560 m/s <sup>2</sup> at 800 to 900 Hz 350 m/s <sup>2</sup> at 1.000 to 2.500 Hz

## Technical Specifications

### Mechanical Data

Male thread	M10 x 1
Wrench size	27 mm
Installation torque	22 Nm in steel 32.5 Nm in aluminum
Weight w/o wire	35,2 g
Sealing	sealed cone

### Electrical Data

Power supply $U_S$	4.75 to 5.25 V
Max power supply $U_S$ max	16 V
Full scale output $U_A$	10 to 90 % $U_S$ ratio metric
Current $I_S$	12 mA

### Characteristic

Load capacity	10 nF
Output resistance	10 $\Omega$
Tolerance (FS)	+ 1 % (0 to 100°C) + 1.5 % (-40 to 0°C and 100 to 130°C)
Sensitivity	15 mV/bar at $U_S = 5$ V
Offset	500 mV at $U_S = 5$ V

**Connectors and Wires**

Connector	ASL 6-06-05PC-HE
Connector loom	ASL 0-06-05SC-HE
Pin 1	-
Pin 2	GND
Pin 3	SIG
Pin 4	U <sub>S</sub>
Pin 5	-

Various motorsport and automotive connectors are available on request.

Please specify the required wire length with your order.

The sensor meets all EMV, EMC and ESD automotive standards.

Please find further application hints in the offer drawing and free download of the sensor configuration file (\*.sdf) for the Bosch Data Logging System at our homepage.

**Installation Notes**

The PSC-260 can be connected directly to most control units. Please consider the TCI for the electrical connection of the sensor.

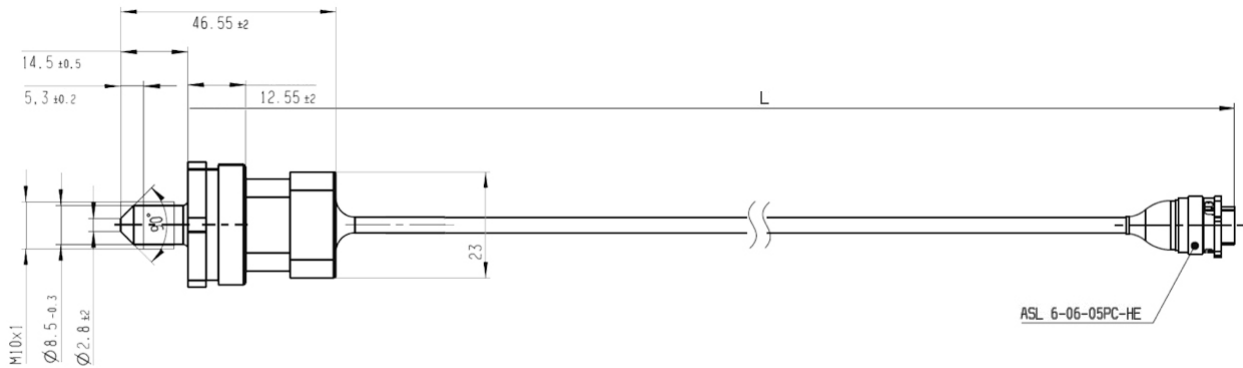
The sensor has a protection for overvoltage, reverse polarity and short-circuit.

Please do not fix the sensor directly to the engine block to avoid undesired strong vibrations.

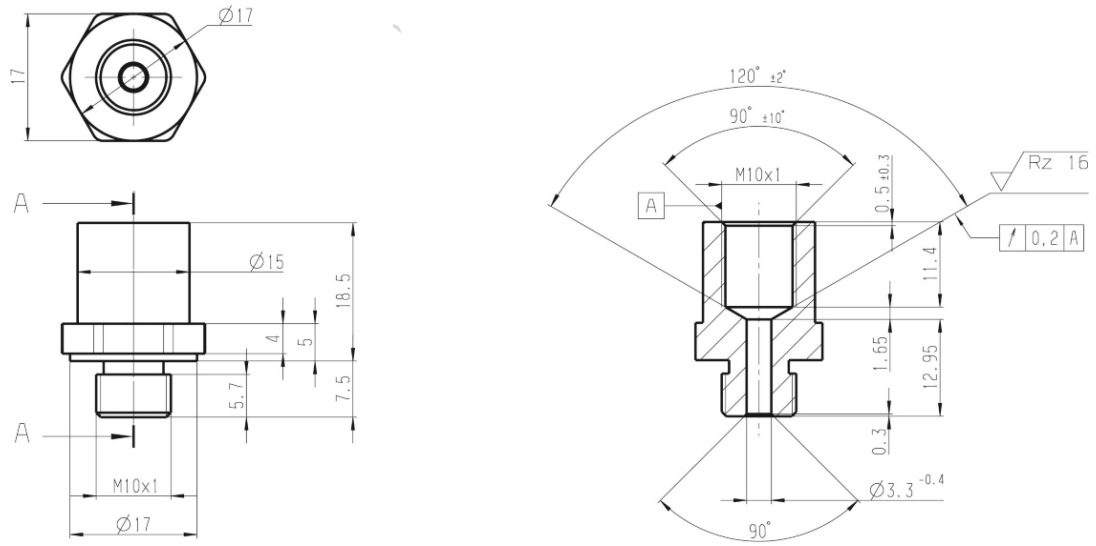
Each mounting orientation is possible.

Please consider using the adapter F 02U 002 711-01.

**Dimensions**



Sensor



Adapter

**Ordering Information**

<b>Pressure Sensor Fluid PSC-260</b>	<b>F02U V00 990-02</b>
<b>Accessories</b>	
<b>Adapter</b>	<b>F 02U 002 711-01</b>

**Europe:**

Bosch Engineering GmbH  
Motorsport  
Robert-Bosch-Allee 1  
74232 Abstatt  
Germany  
Tel.: +49 7062 911 79101  
Fax: +49 7062 911 79104  
motorsport@bosch.com  
www.bosch-motorsport.de

**North and South America:**

Bosch Engineering North America  
Motorsports  
38000 Hills Tech Drive  
Farmington Hills, MI 48331-3417  
United States of America  
Tel.: +1 248 876 2977  
Fax: +1 248 876 7373  
motorsport@bosch.com  
www.bosch-motorsport.com

**Asia Pacific:**

Bosch Engineering Japan K.K.  
Motor Sport Department  
3-33-8 Tsuruya-cho, Kanagawa-ku, Yokohama-shi  
Kanagawa 221-0835  
Japan  
Tel.: +81 45 410 1650  
Fax: +81 45 410 1651

**Represented by**