



Hall-Effect Speed Sensor Mini-HA-P sealed



- ▶ **Wheel/camshaft/crankshaft speed**
- ▶ **Max. frequency ≤ 10 kHz**
- ▶ **High vibration resistance**
- ▶ **Very small housing**
- ▶ **O-ring sealing**

This sensor is designed for incremental measurement of rotational speed (e.g. camshaft, crankshaft and wheelspeed).

Due to the rotation of a ferromagnetic target wheel in front of the Mini-HA-P sealed, the magnetic field is modulated at the place of the Hall probe. A Hall-effect sensor element with integrated signal conditioning circuit detects this change and generates a digital output signal.

The main feature and benefit of this sensor is the combination of a high quality production part and a robust design with a very small housing.

Application

Application	Speed
Max. frequency	≤ 10 kHz
Target wheel air gap	0.2 to 1.5 mm
Temperature range	-40 to 150°C
Output circuit	Open collector for 1 k Ω
Output type	Active low
External magnetic fields	≤ 0.3 mT
Max. vibration	1,200 m/s ² at 10 Hz to 2 kHz

Technical Specifications

Variations

Connector	ASL 6-06-05PC-HE	Without connector
Mating connector	ASL 0-06-05SC-HE	-
Pin 1	U _S	U _S (red)
Pin 2	Gnd	Sig (green)
Pin 3	Sig	Gnd (black)
Pin 4	Nc	-
Pin 5	Nc	-

Mechanical Data

Weight w/o wire	19.2 g
Mounting	With screw 1 x M6
Bore diameter	16 mm
Installation depth L2	12 mm
Tightening torque	8 Nm

Electrical Data

Power supply	5 to 18 V
Current I _S	10 mA

Characteristic

Accuracy repeatability of the falling edge of tooth	< 3 % (≤ 6 kHz) < 5 % (≤ 10 kHz)
Signal output	0.4 V to < U _S

Environment

Target wheel diameter D	162.34 mm
Thickness t	12.5 mm
Width of teeth b1	3.8 mm
Width of gap b2	4.7 mm
Width of sync. gap b3	20.79 mm
Depth of teeth h	3.4 mm
Number of teeth	60-2

Connectors and Wires

Connector	Please see Variations
Sleeve	HT wire \varnothing 5.2 mm
Wire size	AWG 20
Wire length L	< 27 cm

Various motorsport and automotive connectors are available on request.

Please specify the required wire length with your order.

Installation Notes

The Mini-HA-P sealed can be connected directly to most control units and data logging systems.

Please avoid abrupt temperature changes.

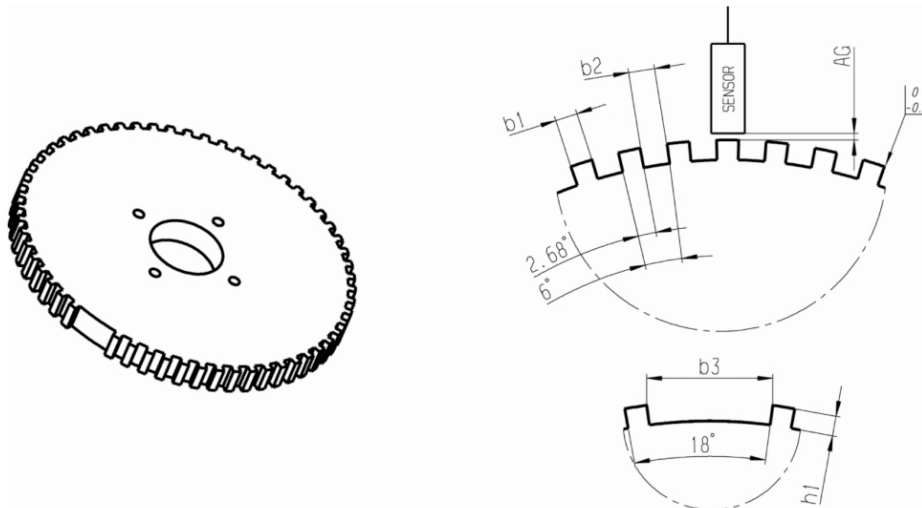
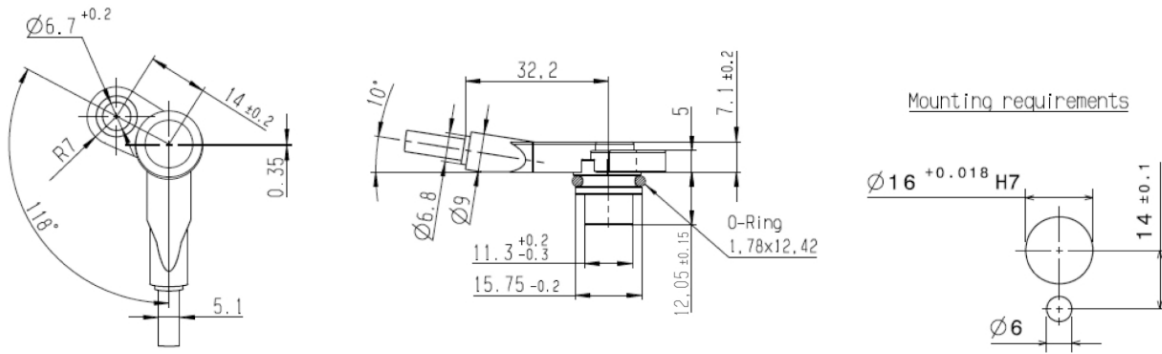
For mounting please use only the integrated plug.

If a wheel with different dimensions is used (see Environment), the technical function has to be tested individually.

Please ensure that the environmental conditions do not exceed the sensor specifications.

Please find further application hints in the offer drawing at our homepage.

Dimensions



Ordering Information

Mini-HA-P sealed ASL 6-06-05PC-HE	F 02U V00 500-01
---	-------------------------

Mini-HA-P sealed without connector	F 02U V00 570-01
--	-------------------------

Europe:

Bosch Engineering GmbH
Motorsport
Robert-Bosch-Allee 1
74232 Abstatt
Germany
Tel.: +49 7062 911 79101
Fax: +49 7062 911 79104
motorsport@bosch.com
www.bosch-motorsport.de

North and South America:

Bosch Engineering North America
Motorsports
38000 Hills Tech Drive
Farmington Hills, MI 48331-3417
United States of America
Tel.: +1 248 876 2977
Fax: +1 248 876 7373
motorsport@bosch.com
www.bosch-motorsport.com

Asia Pacific:

Bosch Engineering Japan K.K.
Motor Sport Department
3-33-8 Tsuruya-cho, Kanagawa-ku, Yokohama-shi
Kanagawa 221-0835
Japan
Tel.: +81 45 410 1650
Fax: +81 45 410 1651

Represented by