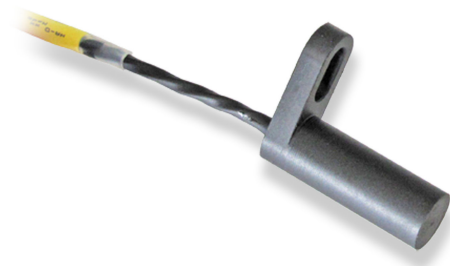


Hall-Effect Speed Sensor HA-D 90

www.bosch-motorsport.com



BOSCH
Invented for life



- ▶ Wheel/camshaft*/crankshaft speed
- ▶ Same housing as Inductive sensor IS-M
- ▶ Very high precision measurement
- ▶ Self-learning
- ▶ Measuring of differences with 2 Hall sensors

This sensor is designed for incremental measurement of rotational speed (e.g. camshaft*, crankshaft or wheelspeed), but it is not a “true power-on” sensor. Due to the rotation of a ferromagnetic target wheel in front of the HA-D, the magnetic field is modulated at the place of the Hall probe.

The main feature and benefit of this sensor is a very good detection of the falling edge, due to a differential measuring method. This sensor is a combination of a high quality production part and robust design with a small housing.

*: see Installation Notes

Application

Application	Speed
Max. frequency	≤ 10 kHz
Target wheel air gap AG	0.4 to 1.0 mm
Temperature range	-40 to 150°C
Output circuit	Open collector for 1 kΩ
Output type	Active high
External magnetic fields	≤ 50 mT
Max. vibration	1,200 m/s ² at 10 Hz to 2 kHz

Technical Specifications

Mechanical Data

Weight w/o wire	12 g
Mounting	Screw 1 x M6
Bore diameter	11.8 mm
Installation depth L2	30 mm
Tightening torque	6 Nm

Electrical Data

Power supply	5 to 18 V
Current IS	20 mA

Characteristic

Accuracy repeatability of the falling edge of tooth	< 1.0 % (≤ 6 kHz) < 1.5 % (≤ 10 kHz)
Signal output	0.52 V to < U _S

Environment

Target wheel diameter D	162.34 mm
Thickness t	12.5 mm
Width of teeth b1	3.8 mm

Width of gap b2	4.7 mm
Width of sync. gap b3	20.79 mm
Depth of teeth h	3.4 mm
Number of teeth	60-2

Connectors and Wires

Connector	ASL 6-06-05PC-HE
Mating connector	ASL 0-06-05SC-HE
Pin 1	U _s
Pin 2	Gnd
Pin 3	Sig
Pin 4	Nc
Pin 5	Nc

Various motorsport and automotive connectors available on request.

Sleeve	DR-25
Wire size	AWG 24
Wire length L	15 to 100 cm

Please specify the required wire length with your order.

Installation Notes

The HA-D 90 is no true-power-on sensor. It needs the falling edge of two teeth for correct working. After a time of 0.68 s without rotation of the detected wheel it needs again the falling edge of two teeth.

The HA-D 90 can be connected directly to most control units and data logging systems

Please specify the angle between the mounting and the target wheel.

Please avoid abrupt temperature changes.

For mounting please use only the integrated plug.

If a wheel with different dimensions is used (see Environment), the technical function has to be tested individually.

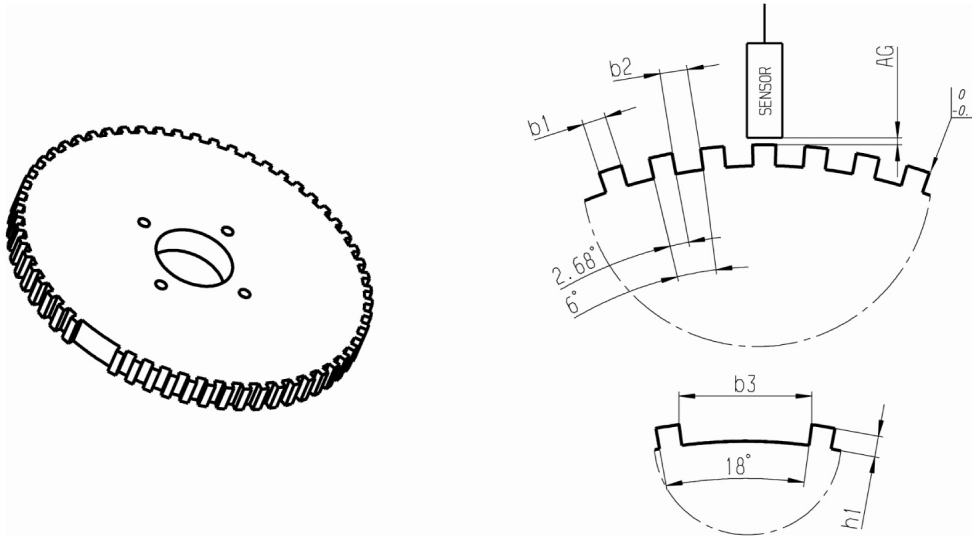
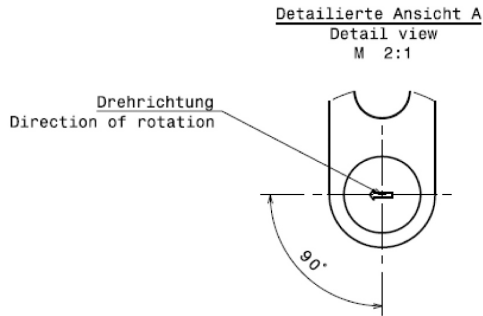
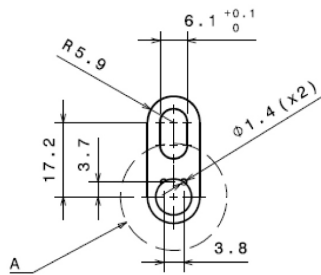
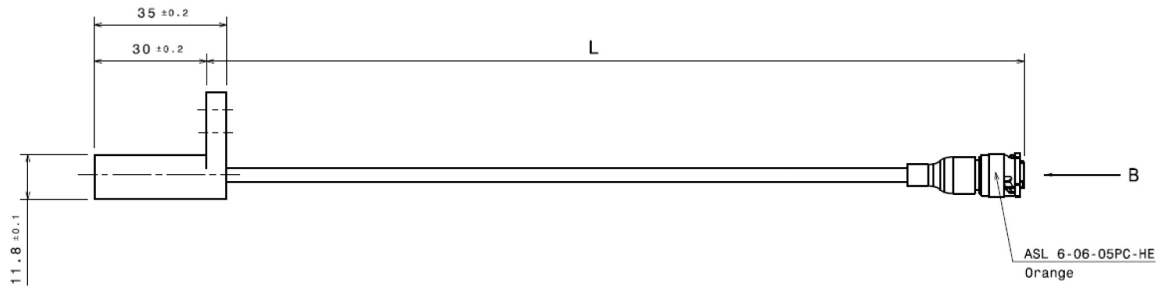
Please ensure that the environmental conditions do not exceed the sensor specifications.

Please find further application hints in the offer drawing at our homepage.

Ordering Information**Hall-Effect Speed Sensor HA-D 90**

Order number **F 02U V00 334-01**

Dimensions



Represented by:

Europe:
Bosch Engineering GmbH
Motorsport
Robert-Bosch-Allee 1
74232 Abstatt
Germany
Tel.: +49 7062 911 79101
Fax: +49 7062 911 79104
motorsport@bosch.com
www.bosch-motorsport.de

North and South America:
Bosch Engineering North America
Motorsports
38000 Hills Tech Drive
Farmington Hills, MI 48331-3417
United States of America
Tel.: +1 248 876 2977
Fax: +1 248 876 7373
motorsport@bosch.com
www.bosch-motorsport.com

Asia-Pacific:
Bosch Engineering Japan K.K.
Motor Sport Department
3-33-8 Tsuruya-cho, Kanagawa-ku, Yokohama-shi
Kanagawa 221-0835
Japan
Tel.: +81 45 410 1650
Fax: +81 45 410 1651
motorsport@bosch.com
www.bosch-motorsport.com