



# HP Injection Valve HDEV 5.2



- ▶ **Max. 200 bar**
- ▶ **Multi hole**
- ▶ **Flow rate at 100 bar: up to 1,500 cm<sup>3</sup>/min (N-heptane)**
- ▶ **Spray angle 8 to 20°**

The HDEV 5.2 is a high pressure injector, which is developed to be used as a port or a direct injector.

The function of the HDEV 5.2 is both to meter out the fuel and to obtain a well-defined mixture of fuel and air. It is an inward opening solenoid injector which is optimized regarding very short opening and closing times which ensures a very stable linearity at short injection times.

The benefit of this injector is a high spray variability concerning spray angle and spray shape. Also the flow rate can be defined in a big range. Bosch offers the spray targeting design according to the individual customer requirements. If your application conditions will not match the listed performance data, please ask for consultancy at Bosch Motorsport. In addition to the specific designed sample, Bosch offers cost effective production HDEV 5.2 on request.

## Application

Application	308 to 1,026 g/min at 100 bar (typical)
Fuel input	Top-feed injector
Fuel	Gasoline
Operating pressure	200 bar
Operating temperature range	-31 to 130°C

Storage temperature range	-40 to 70°C
Max. vibration	600 m/s <sup>2</sup>

## Technical Specifications

### Mechanical Data

Weight w/o wire	68 g
Diameter	20.7 mm
Length	87 mm
Spray type	Multi hole
Number of holes	4 to 7 holes (typical)
Spray angle overall	110° (typical)
Spray angle single beam	8 to 20°
Static flow tolerance	±5 %
Dynamic flow tolerance	±6 % at $t_i = 1.5$ ms
Leakage	≤2.5 mm <sup>3</sup> /min at 23°C

### Electrical Data

Booster supply	65 to 90 V
Booster current	13.2 A
Booster time	500 μs
Power supply	12 V
Pick up current	9.6 A
Pick up time	800 μs

Hold power supply	12 V
Hold current	3.0 A hysteresis 0.8 A
Coil resistance	1,500 mΩ (ambient temp.)

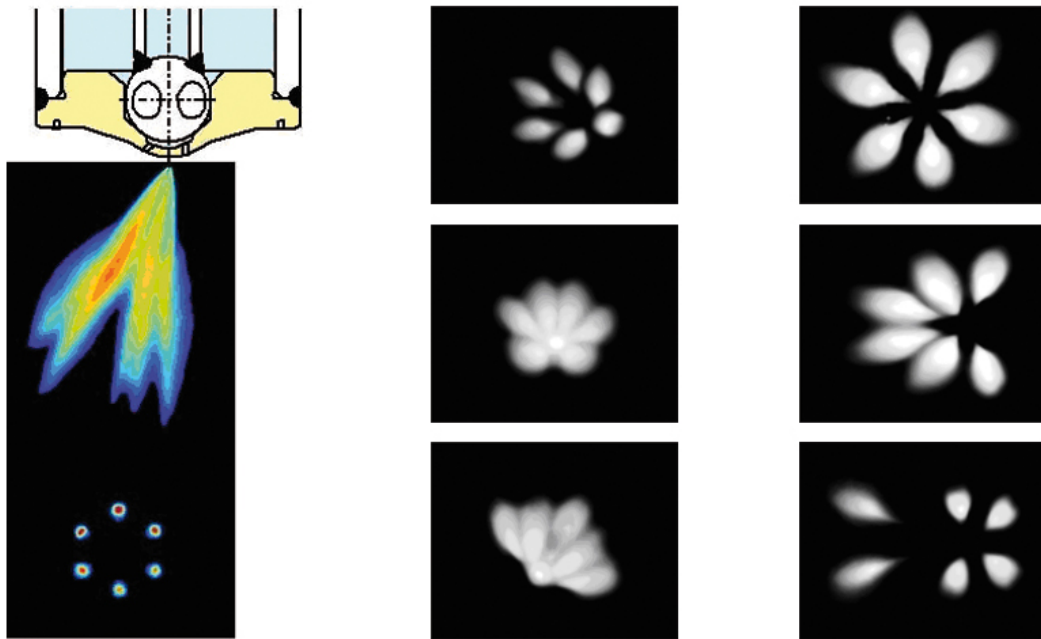
**Connectors and Wires**

Mating connector Compact	D 261 205 359-01
Connector Jetronic (wire)	D 261 205 288-01
Connector motorsports (wire)	On request
Pin 1	Pos
Pin 2	Gnd

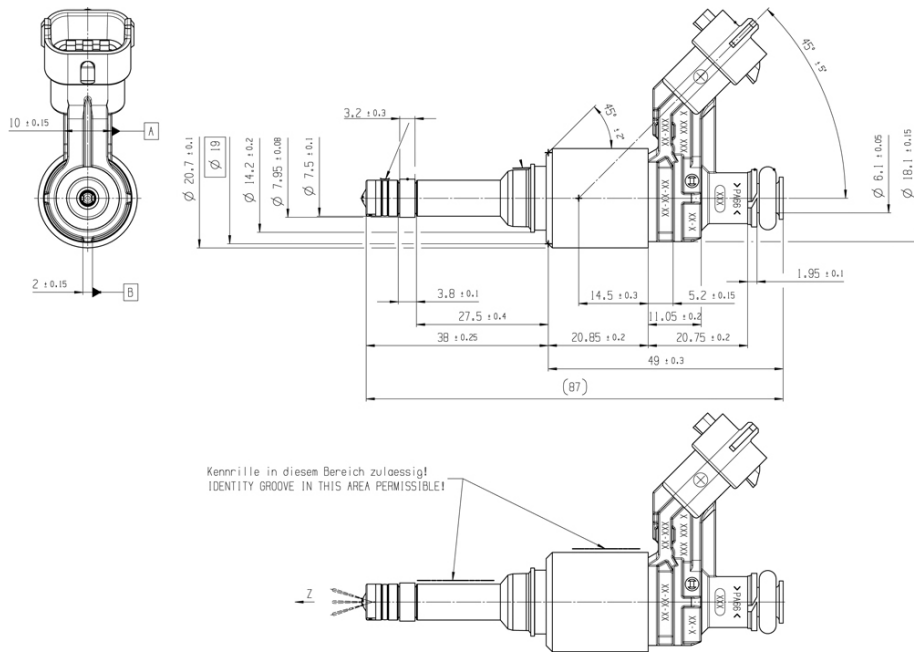
**Installation Notes**

The injector has to be supplied by a Bosch Motorsport Power Stage Unit (e.g. HPI 5 or HPI 1.16).  
 Listed electrical values may vary according to the application.  
 The injector can be cleaned (mechanically or chemically), if the tip will not be damaged.  
 Do not use supersonic cleaning.

**Dimensions**



*Spray variations, further variations on request*



### Ordering Information

HP Injection Valve HDEV 5.2

on request

**Europe:**

Bosch Engineering GmbH  
Motorsport  
Robert-Bosch-Allee 1  
74232 Abstatt  
Germany  
Tel.: +49 7062 911 79101  
Fax: +49 7062 911 79104  
motorsport@bosch.com  
www.bosch-motorsport.de

**North and South America:**

Bosch Engineering North America  
Motorsports  
38000 Hills Tech Drive  
Farmington Hills, MI 48331-3417  
United States of America  
Tel.: +1 248 876 2977  
Fax: +1 248 876 7373  
motorsport@bosch.com  
www.bosch-motorsport.com

**Asia Pacific:**

Bosch Engineering Japan K.K.  
Motor Sport Department  
3-33-8 Tsuruya-cho, Kanagawa-ku, Yokohama-shi  
Kanagawa 221-0835  
Japan  
Tel.: +81 45 410 1650  
Fax: +81 45 410 1651

**Represented by**