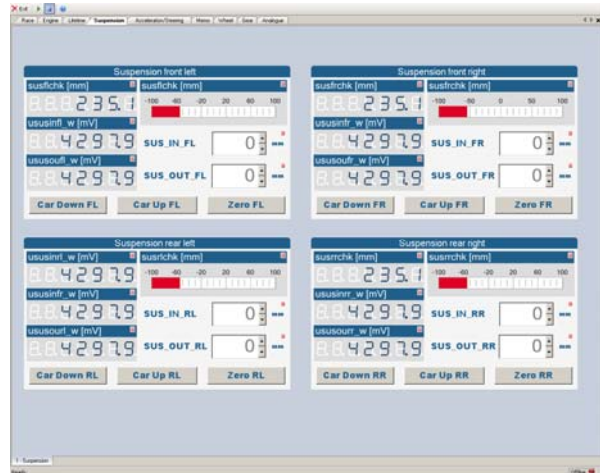
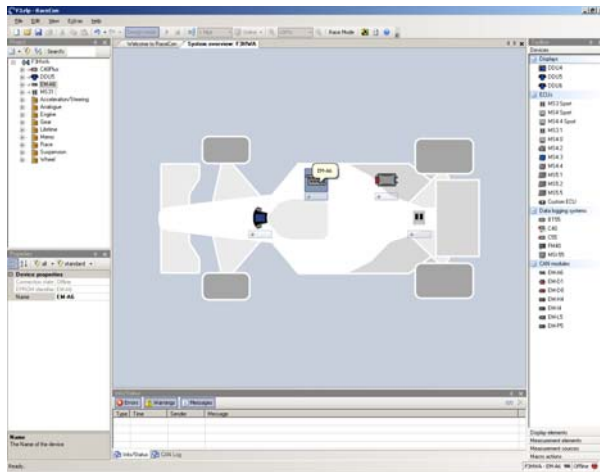


RaceCon

RaceCon is an all integrated software tool for configuration / calibration of Bosch Motorsport hardware products, such as ECUs, displays, loggers. The communication is based on Bosch Motorsport MSA-Box interface.



General Functions

- Calibration of ECU maps & curves
- ECU Datafile up- and download
- Parameterfile up- and download
- Diagnostic functionality for Bosch Motorsport ECUs
- Datafile / Workbase management
- Integrated flash functionality
- Configuration Bosch Motorsport Displays
- Integrated Bosch Sensor Database
- Configuration of Bosch Motorsport Data Loggers
- Configuration of Bosch Motorsport DLS System
- Configuration of Bosch Motorsport CAN Modules
- Communication via K-Line/CAN/Ethernet (KWP/CCP/XCP)
- CAN Communication-Log functionality (Baud rate changeable)
- Quick data access over Race Mode
- Intuitive design, easy to use

Required Hardware Components

PC:

- IBM PC Pentium/AMD Athlon compatible, min. 1.6 GHz
- Min. 2 GB RAM
- Min. 1 GB free HD space
- VGA / WGA monitor (min. 1,024 x 768)

Operating systems:

Windows XP 32 Bit, Vista 32 Bit

Optional Accessories

MSA-Box II F 02U V00 327-01

Part Number

RaceCon bundled with
Bosch Motorsport hardware