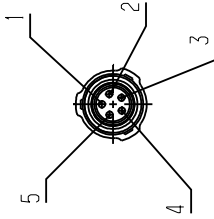


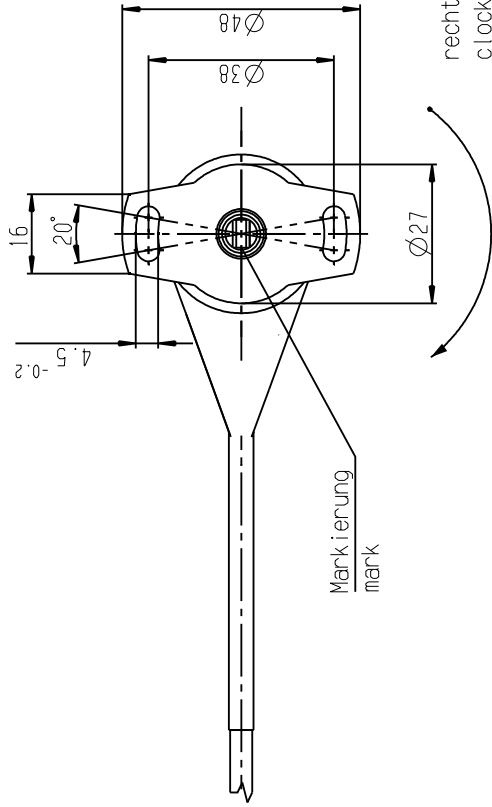
Ansicht A  
view



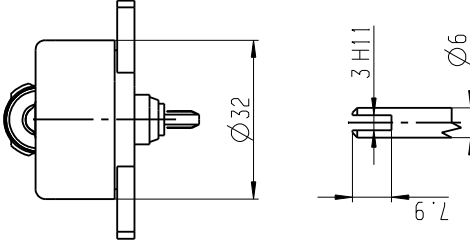
Pinbelegung  
Pin assignment:

- 1: Us (5V)
- 2: GND
- 3: Sig
- 4: Frei/Free
- 5: Frei/Free

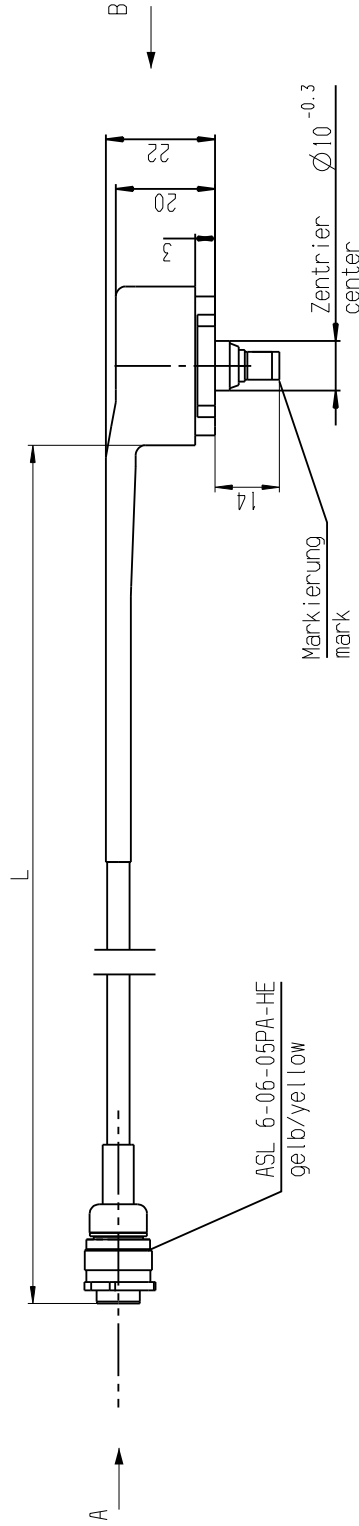
ASL 6-06-05PA-HE



Ansicht B  
view



Antriebsseite/  
driveshaft



ASL 6-06-05PA-HE  
gelb/yellow

Darstellung in der Mitte des nutzbaren Drehwinkels  
drawing in middle of useful range

ISO Sys of Limits & Fits/ISO Sys. Drenm. u. Pass.	
ISO 286-2:1988-06	
Size/Größe	Unit/Größe
Upper	Lower
h1	h2
General tolerances (or Alligmenttolerances) (Gr)	
Lin. dim./Länge	radii/Radien
angles/Winkel	

00 Erstanlage	20080804	NI	Checked/Gepr.	Released/Freeg.	EB/IN	Resp. Dept./Verantwort.	Info. Info./Ins. Info.
id. Changes/Änderung	YYYYMMDD		Drawn/Gez.				
Lang./Spr.	Syst.	Right./Ger.	AGZ-A3				
en/de	CAT		BOSCH				
Scale/ Maßstab			OFFER DRAWING				
1:1			ANGEBOTSZEICHN.				
P/NR							
Drehpotentiometer							
Rotary potentiometer							
1/1							
Formet							
DP/10							
400 BF							
F 01T A21							
Repl. for							
Repl. by							

F 01T A21 400 BF	150±5	345°	ASL 6-06-05PA-HE	rechtsdrehend / clockwise
Bestell-Nr.	Länge L	el. Nutz.	Stecker	Drehrichtung
order-no.	length [mm]	usef. range	connector	direction of rotation

© Robert Bosch GmbH. All rights reserved, also regarding any disposal, exploitation, reproduction, editing, distribution, as well as in the event of applications for industrial property rights.