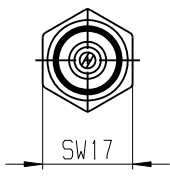
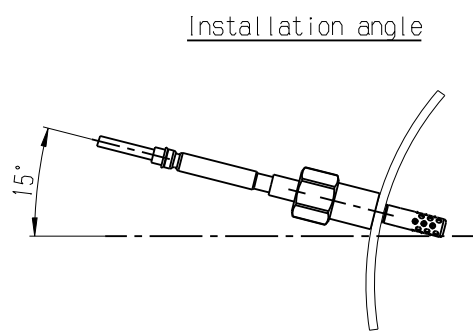


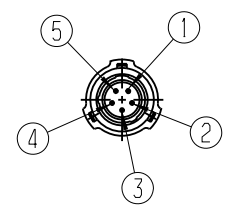
© Robert Bosch GmbH. Alle Rechte vorbehalten, auch bzgl. jeder Verfügung, Vervielfältigung, Reproduktion, Bearbeitung, Weitergabe sowie für den Fall von Schutzrechtsmeldungen.



Front view
Scale: 1:1



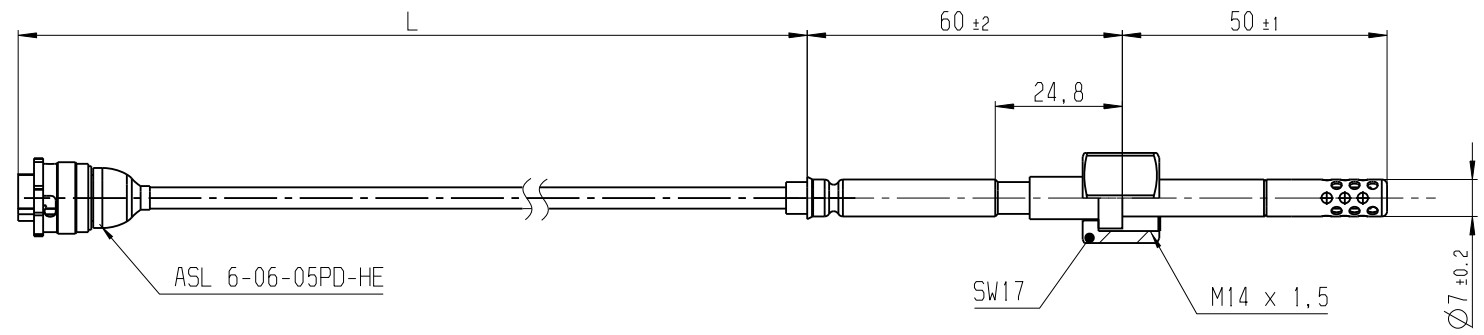
Installation angle must be inclined at least 15° towards horizontal (electrical connection upwards).



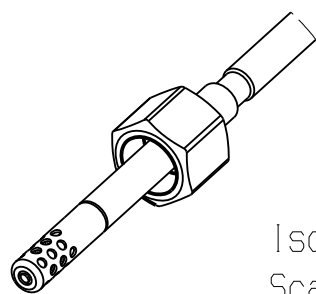
- 1: n.c.
- 2: Signal
- 3: GND
- 4: n.c.
- 5: n.c.

ASL 6-06-05PD-HE

Please use this sensor only with a **1000Ω ±0.1%** pull-up resistor



Section view A-A
Scale: 1:1



Isometric view
Scale: 1:1

Surf. roughn. N12A D53:2003-08 Rauheitsang.: N12A D53/1:2003-08		
Edges: DIN ISO 13715: 2000-12 Kanten:		
Metr. ISO	w/o surface ohne Oberfl.	with surface mit Oberfl.
Ext. thread Aussengew.	.	.
Int. thread Innengew.	.	.
Non-toleranced dimensions Nicht tolerierte Masse		
>0,2	>0,5	>3
...0,5	...3	...6
		>6
		>30
		>120
±0,1	±0,1	±0,1
		±0,2
		±0,3
		±0,5
Radii, chamfers Rundungen, Fasen		
±0,1	±0,2	±0,5
		±1
		±2
		±4
Angles, dim. of the shorter side Winkel, Masse der kuerzeren Schenkel		
...10	> 10	> 50
	...50	...120
		> 120
		> 400
±1'	±30'	±20'
		±10'
		±5'
Tolerances of form and position Form- und Lagetoleranzen DIN ISO 2768-2-H:1991-04 (N13 B92/1: 2000-03)		
ISO lim. of size ISO-Grenzmasse		
Size over Mass ueber	to bis	Tol. class Toleranz- klasse
		Lim. deviations Grenz- abmasse
		.
		.
		.
		.

© Robert Bosch GmbH. All rights reserved, also regarding any disposal, exhibition, reproduction, editing, distribution, as well as in the event of applications for industrial property rights.

01 Erstellung 20100315 FzF										WzP	
Ind.	Change/Aend.	YYYYMMDD	Drawn/Gez.	Checked/Gepr.	Releas./Freig.	BWN	Resp. dept./Veranw. Abt.	Add. info./Zus. Info.			
Treatment Behandlung	--						Missed details/Fehlende Angaben		Size/Gst. --		
Mat./Stoff	--						From/Aus		--		
Lang./Spr. en/de	X		Wght./Gew. --		BOSCH		Abgastemperatursensor PT200 E			Sheet/Bl. 1/1	
Crit. P. --		Scale/M. stab 1:1		Mat. meets/Stoffe s. N2580-1		Syst. CAT		Doc. type F 02U V00 811-01		DP/TD Ind.	Format A3
MNR	--						Repl. for		Repl. by		

F 02U V00 811-01	150 ... 1000	ASL 6-06-05PD-HE	-40 ... 900 (+1050 5 hours)	-
Bestell Nr. order no.	Länge - L length [mm]	Stecker connector	Measurement range [°C]	-