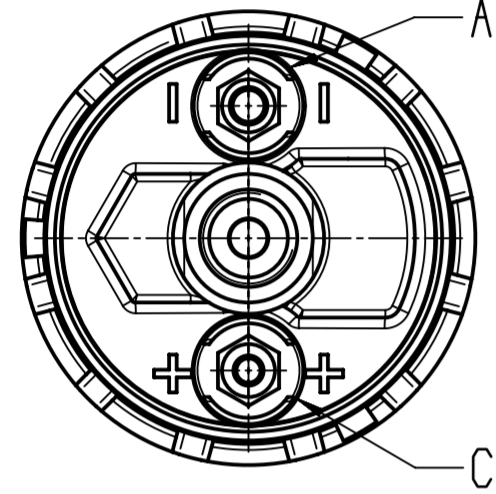


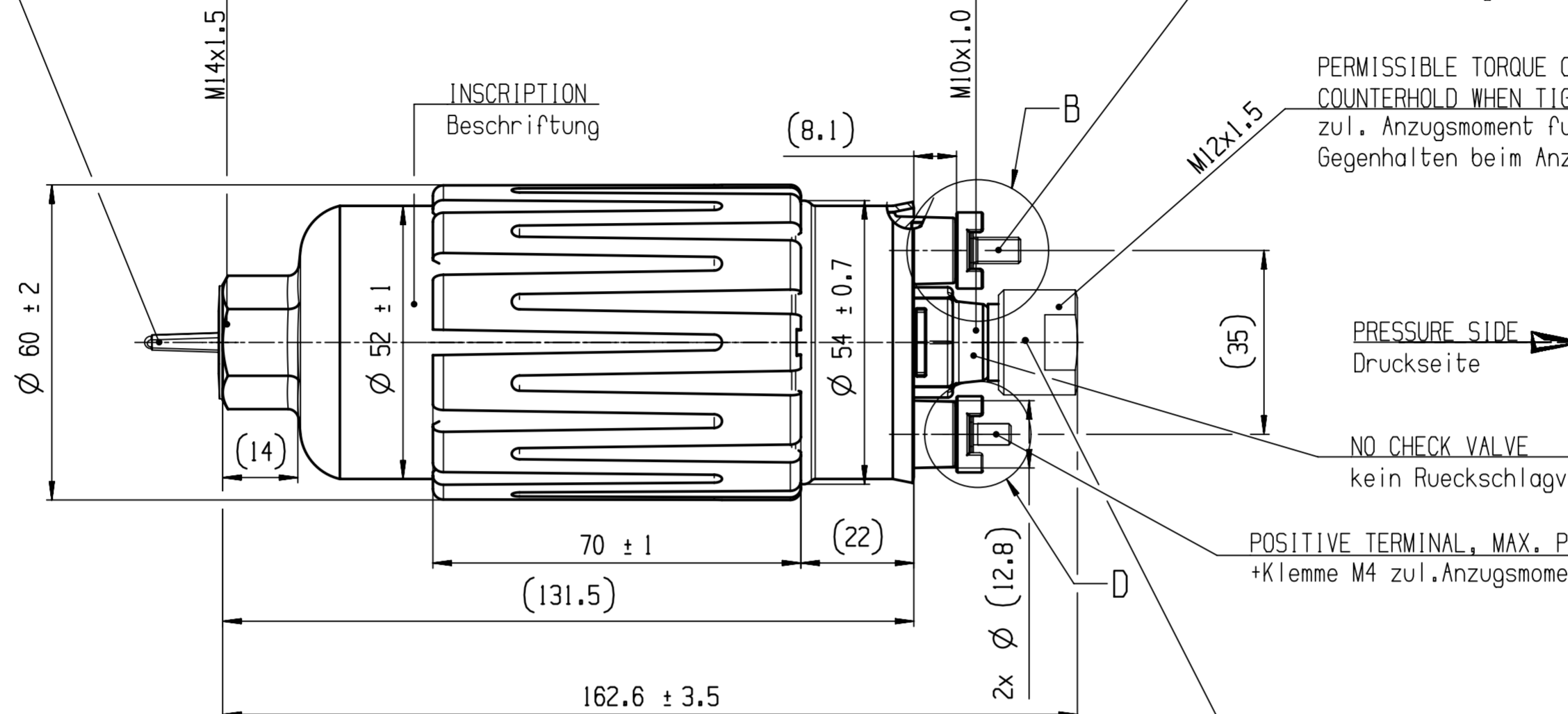
PERMISSIBLE TORQUE OF CONNECTION FITTING 30...35 Nm  
DURING SCREWING, HOLD BY HEXAGON - NOT BY PUMP BODY!  
zul. Anzugsmoment fuer Anschlussstueck 30...35 Nm  
beim Anziehen am Gehaeuse, 6-kant gehalten  
nicht den Pumpenkoerper halten!

PERMISSIBLE TORQUE OF CONNECTION FITTING 20...24 Nm  
WHEN TIGHTENING THE CONNECTION PIECE, HOLD ON TO THE CONNECTION COVER  
DO NOT CLAMP THE PUMP!  
zul. Anzugsmoment fuer Anschlussstueck 20...24 Nm  
beim Anziehen am Gehaeuse, Anschlussdeckel gehalten  
nicht den Pumpenkoerper halten!

PROTECTIVE CAP FOR SHIPPING PURPOSES  
Verschlusskappe fuer Transport



SUCTION SIDE  
Saugseite



NEGATIVE TERMINAL, MAX. PERMISSIBLE TORQUE OF NUT M5:1,6+0,4 Nm  
-Klemme M5 zul. Anzugsmoment fuer Mutter 1,6+0,4 Nm

PERMISSIBLE TORQUE OF CONNECTION FITTING 22...27 Nm  
COUNTERHOLD WHEN TIGHTENING  
zul. Anzugsmoment fuer Anschlussstueck 22...27 Nm  
Gegenhalten beim Anziehen

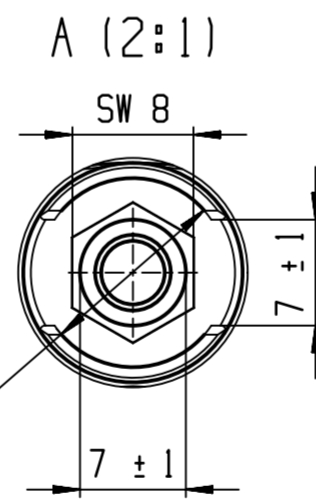
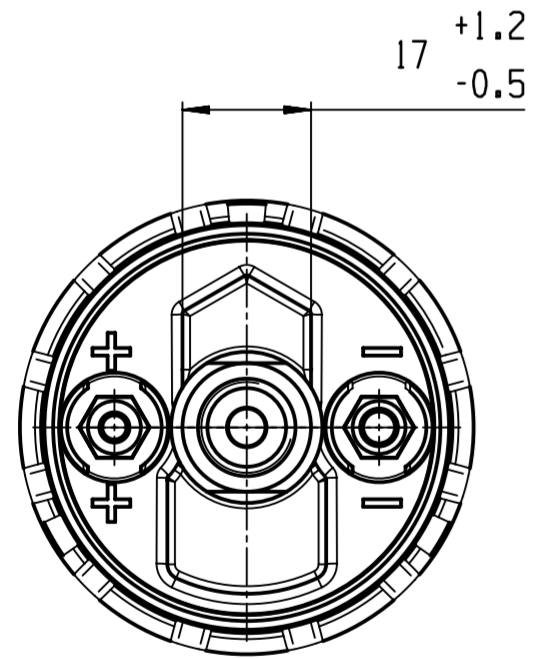
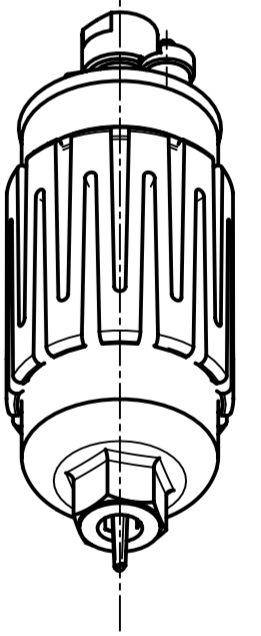
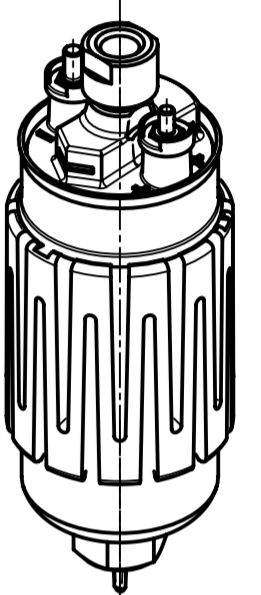
PRESSURE SIDE  
Druckseite

NO CHECK VALVE  
kein Rueckschlagventil

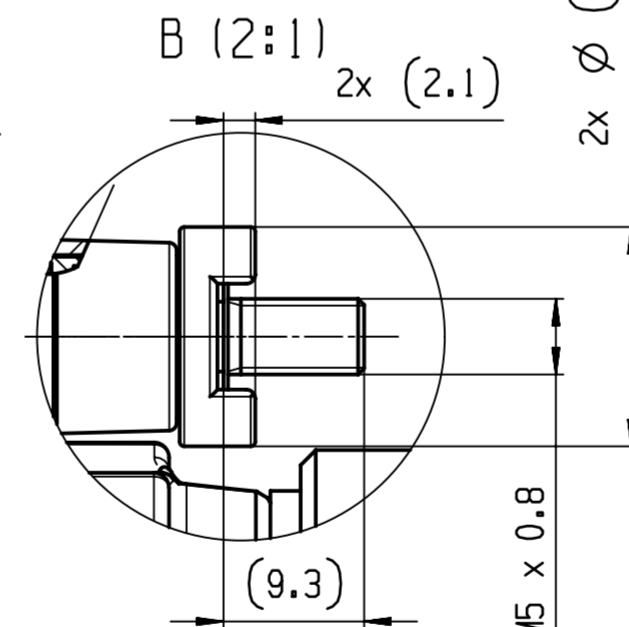
POSITIVE TERMINAL, MAX. PERMISSIBLE TORQUE OF NUT M4:1,2+0,4 Nm  
+Klemme M4 zul. Anzugsmoment fuer Mutter 1,2+0,4 Nm

HYDRAULIC CONNECTOR IS NOT ASSEMBLED ON THE PUMP; DELIVERED SEPARATELY IN THE PACKAGING  
Hydraulikanschluss ist nicht an der Pumpe montiert; Separat in der Verpackung geliefert

3D VIEW / 3D Ansicht  
1:2

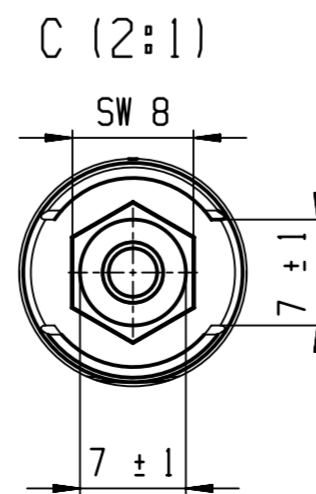
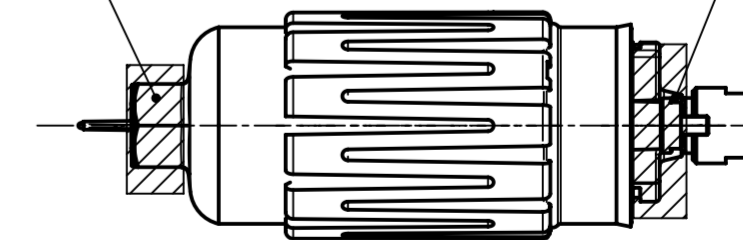


-Klemme

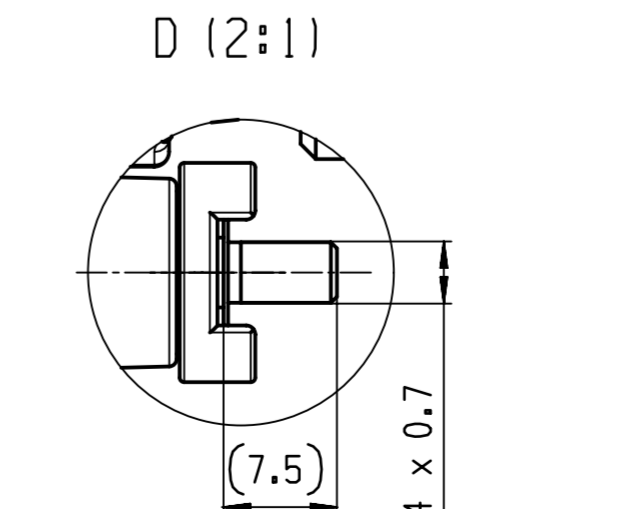


1:2

CLAMPING AREA FOR TIGHTENING  
OF HYDRAULIC CONNECTORS  
Klemmbereich zum Festziehen  
von hydraulischen Steckverbindern



+Klemme



linear size acc. to / Groessenmasse nach ISO 14405-1:2016-08		
general tolerances for/Allgemeintoleranzen fuer lin. dim./L.-masse radii/Radien angles/Winkel		
±, mm	±, mm	±, °
general tolerances acc. to/Allgemeintoleranzen n. dimensional tol./Masstol. tol.-class/T.-kl.		
ISO 2768-1:1989-11	m	
geometrical tol./Form- und Lagetol. tol.-class/T.-kl.		
ISO 2768-2:1989-11	H	
linear size acc. to / Groessenmasse nach ISO 14405-1:2010-12		
a		

0580.464.201	0580.464.151	0580 K00 05W	0 580 464 151 12V Made in ...	779 g
0580.464.209	0580.464.153	0580 K00 05Y	0 580 464 153 24V Made in ...	767 g
ORDER NUMBER Bestell-Nr.	BASE PUMP Basispumpe	PRODUCT-SPEC. Kenndatenblatt-Nr.	INSCRIPTION FOR PUMP Beschriftung der Pumpe	WEIGHT Gewicht

02 F029034638	20210113	PMA2BJ	VAM2BJ	209	PS-FS/ENG-BJ
01 F029034638	20201214	PMA2BJ	VAM2BJ	209	PS-FS/ENG-BJ
Ind. Change/Änd.	YYYYMMDD	Drawn/Gez.	Checked/Gepr.	Releas./Freig.	BWN Resp. dept./Verantw. Abt.
Lang./Spr. en/de	Syst. UG	Wght./Gew.	Scale/M.stab 1:1	ELECTRIC FUEL PUMP ELEKTROKRAFTSTOFFPUMPE	
MNR	OFFER DRAWING ANGEBOTSZEICHN.			Doc. type AGZ	Sheet/Bl. 1 / 1
0 580 A00 08N				DP/TD 001	Ind. 02
Repl. for				Repl. by	

© Robert Bosch GmbH. All rights reserved. Also regarding any disposal, exploitation, reproduction, editing, distribution, as well as in the event of applications for industrial property rights.