

FPR Adaptor light



- ▶ Aluminum housing
- ▶ Fits to production type regulators and Motorsport regulators (FPR Mini 2, Mini 5, Mini A)
- ▶ Very light weight

This adaptor offers the opportunity to convert a rail pressure regulator into an inline pressure regulator. The adaptor is able to hold a production type regulator as well as a motorsport regulator. Delivery without regulator.

Application

Fuel compatibility	Gasoline, E85/M100
Operating temperature range	-40 to 120°C
Storage temperature range	-40 to 100°C
Max. vibration	<600 m/s ² at 5 to 250 Hz

Technical Specifications

Mechanical Data

Diameter	50 mm
Height	55 mm

Weight	92 g
Mounting	Screw fastening with M6 screws into housing or M5 screws through housing

Connectors and Wires

Connector supply	2 x M14 x 1.5
Connector reflow	M14 x 1.5

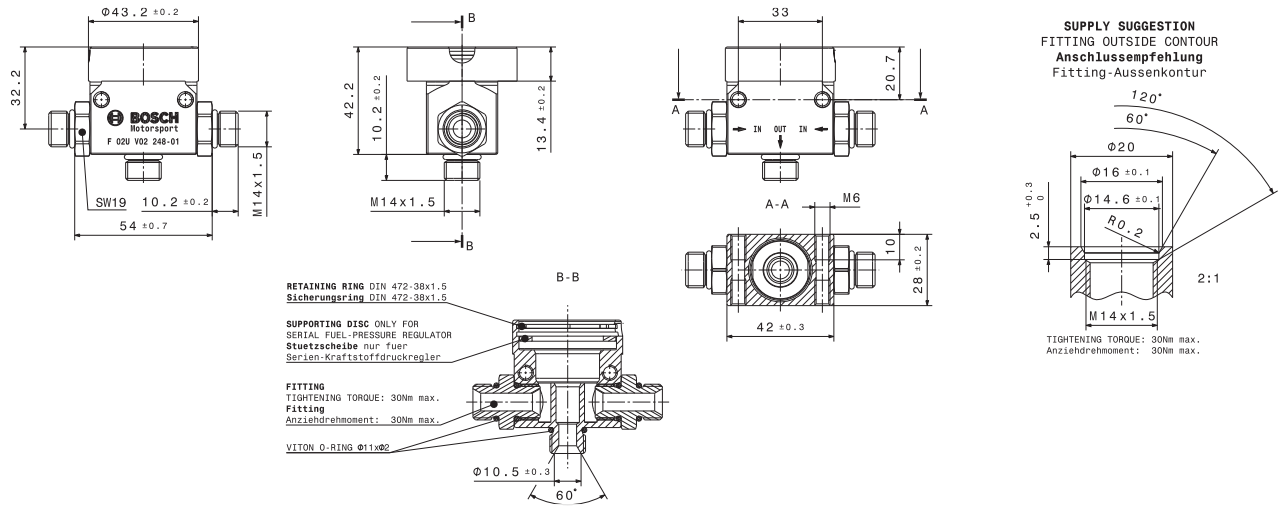
Legal Restrictions

Due to embargo restrictions, sale of this product in Russia, Belarus, Iran, Syria, and North Korea is prohibited.

Ordering Information

FPR Adaptor light
Order number **F02U.V02.248-01**

Dimensions



Represented by:

Europe:
Bosch Engineering GmbH
Motorsport
Robert-Bosch-Allee 1
74232 Abstatt
Germany
motorsport@bosch.com
www.bosch-motorsport.de

North America:
Bosch Engineering North America
Motorsport
38000 Hills Tech Drive
Farmington Hills, MI 48331-3417
United States of America
motorsport@bosch.com
www.bosch-motorsport.com

Asia-Pacific:
Bosch Engineering Japan K.K.
Motorsports Department
1-9-32 Nakagawachuo, Tsuzuki-ku
Yokohama-shi
Kanagawa, 224-8601
Japan
motorsport@jp.bosch.com
www.bosch-motorsport.jp

Australia, New Zealand and South Africa:
Robert Bosch Pty. Ltd
Motorsport
1555 Centre Road
Clayton, Victoria, 3168
Australia
motor.sport@au.bosch.com
www.bosch-motorsport.com.au