

Temperature Sensor NTC M6-HS



- ▶ Application: -55 to 300°C
- ▶ Accuracy at 25°C: ± 0.3°C
- ▶ Accuracy at 100°C: ± 1.3°C
- ▶ Male thread: M6 x 1
- ▶ Nominal resistance: 10 kOhm ± 1 % (at 25°C)

This sensor is designed to measure temperatures up to 300°C of oil, water, fuel or air. This signal is used as a control value for engine control units or as a measurement value which is logged in a data acquisition system.

The NTC-sensing element has a negative temperature coefficient. This means, that with increasing temperature the conductivity rises and the resistance decreases. To improve a good protection against the ambient temperature, the housing is made of stainless steel and partly filled with an isolation-paste. The main benefit of the sensor is a very compact design and its very short response time.

Application

Application	-55 to 300°C
Storage temperature range	0 to 100°C
Bio fuel compatibility	-

Technical Specifications

Mechanical Data

Male thread	M6x1
Wrench size	10 mm
Installation torque	8 Nm
Weight w/o wire	6.5 g
Sealing	O-Ring 4.47 x 1.78 mm

Electrical Data

Characteristic	NTC
Nominal resistance at 25°C	10 kOhm ± 1 %

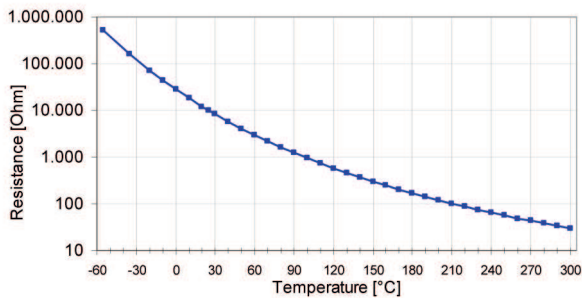
Characteristic

Accuracy at 25°C (homogeneous cond.)	± 0.3°C
Accuracy at 100°C (homogeneous cond.)	± 1.3°C
Response time tau 63 in still water	< 4 s

Characteristic Application

T [°C]	R [Ohm]
-55	519,910
-35	158,090
-20	71,668
-10	44,087
0	27,936
10	18,187
20	12,136
25	10,000
30	8,284
40	5,774
50	4,103
60	2,967
70	2,182
80	1,629
90	1,234
100	946.6
110	735.5
120	578.1
130	459.4
140	368.8

150	298.9
160	244.4
170	201.6
180	167.6
190	140.4
200	118.5
210	100.7
220	86.08
230	74.05
240	64.08
250	55.75
260	48.76
270	42.87
280	37.86
290	33.59
300	29.94



Connectors and Wires

Connector	ASL606-05PN-HE
-----------	----------------

Mating connector	F02U.000.231-01
ASL006-05SN-HE	
Pin 1	-
Pin 2	Sig-
Pin 3	Sig+
Pin 4	-
Pin 5	-
Various motorsport and automotive connectors are available on request.	
Wire size	AWG 24
Wire length L	15 to 50 cm
Please specify the required wire length with your order.	

Installation Notes

The NTC M6-HS can be connected directly to most control units using a pull-up resistor (typically 1 or 3 kOhm).

Any mounting orientation is possible.

Please find further application hints in the offer drawing and free download of the sensor configuration file (*.sdf) for the Bosch Data Logging at our homepage.

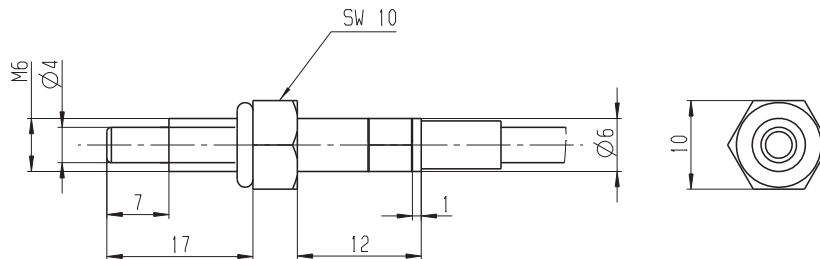
Legal Restrictions

Due to embargo restrictions, sale of this product in Russia, Belarus, Iran, Syria, and North Korea is prohibited.

Ordering Information

Temperature Sensor NTC M6-HS
Order number **F02U.V00.486-01**

Dimensions



Represented by:

Europe:
Bosch Engineering GmbH
Motorsport
Robert-Bosch-Allee 1
74232 Abstatt
Germany
Tel.: +49 7062 911 9101
Fax: +49 7062 911 79104
motorsport@bosch.com
www.bosch-motorsport.de

North America:
Bosch Engineering North America
Motorsport
38000 Hills Tech Drive
Farmington Hills, MI 48331-3417
United States of America
Tel.: +1 248 876 2977
Fax: +1 248 876 7373
motorsport@bosch.com
www.bosch-motorsport.com

Asia-Pacific:
Bosch Engineering Japan K.K.
Motorsport
18F Queen's Tower C, 2-3-5 Minato
Mirai Nishi-ku, Yokohama-shi
Kanagawa 220-6218
Japan
Tel.: +81 45 650 5610
Fax: +81 45 650 5611
www.bosch-motorsport.jp

Australia, New Zealand and South Africa:
Robert Bosch Pty. Ltd
Motorsport
1555 Centre Road
Clayton, Victoria, 3168
Australia
Tel.: +61 (3) 9541 3901
motor.sport@au.bosch.com