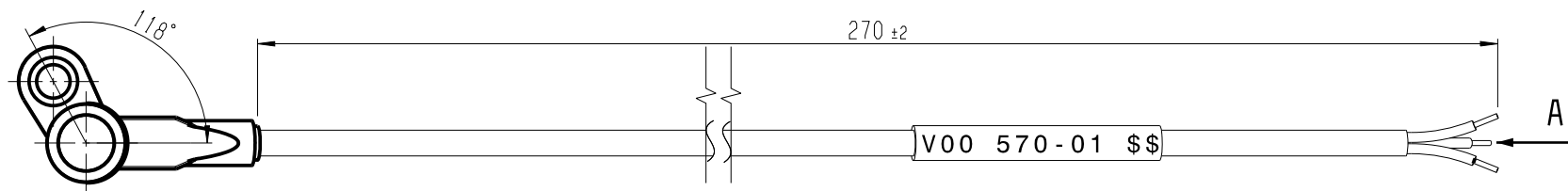
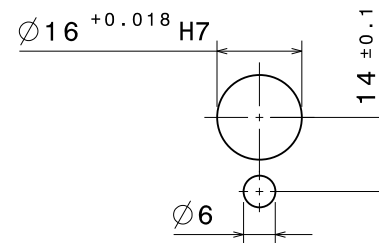


Einbauvorschrift  
Mounting requirements

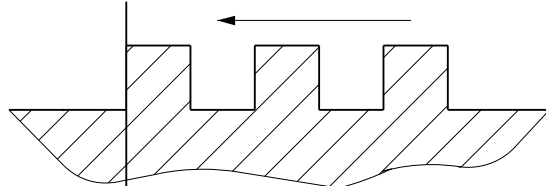


red wire = Power supply (5...18v)

green wire = Signal

black wire = Ground

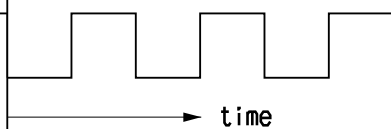
Direction of rotation



Target wheel

angle

8x



Output signal

General tolerances acc.to/Allgemeintoleranzen n.	
dimensional tol./Masstol.	tol.-class/T.-kl.
ISO 2768-1:1989-11	m
geometrical. tol./Form- u. Lagetol.	tol.-class/T.-kl.
ISO 2768-2:1989-11	H
0.5 ... 3	>3 ... 6
>6 ... 30	>30 ... 120
>120 ... 400	>400 ... 1000
non-toleranced dimensions/ Nicht tolerierte Masse	
±0.1	±0.2
±0.3	±0.5
±0.8	±1
non-tol. broken edges/ Nicht tol. gebrochene Kanten	
±0.2	±0.5
angles, length of the shorter side/ Winkel, Laenge des kuerzeren Schenkels	
to/bis 10 ... 50	>50 ... 120
>120 ... 400	>400
±1'	±0'30"
±0'20"	±0'10"
±0'5'	
all linear dimensions in/ Alle Laengenmasse in	
mm	
size acc. to / Masse nach	
ISO 14405-1:2010-12	
envelope principle / Huellprinzip	
E	

02 Modellkorr.	20140915	LrH	SgW	WzP	6720BEG-MSD-P		
01 Erstellung	20100219	FzF	SgW	WzP	6720BEG-MSD-P		
Ind.	Change/Aenderung	YYYYMMDD	Drawn/Gez.	Checked/Gepr.	Releas./Freig.	BWN	
Lang./Spr.	Syst.	Wght./Gew.	Resp. dept./Verantw.Abt.				Add. info./Zus. Info.
en/de	CAT	--	Hall effect speed sensor Hall-Drehzahlsensor				Sheet/Bl. 1/1
Scale/M.stab 1:1		BOSCH		Doc.type AGZ		F02U V00 570-01	
MNR --		OFFER DRAWING ANGEBOTSZEICHN.		Repl. for		Repl. by	