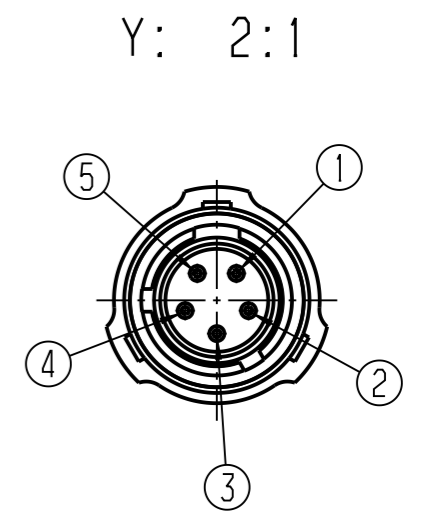
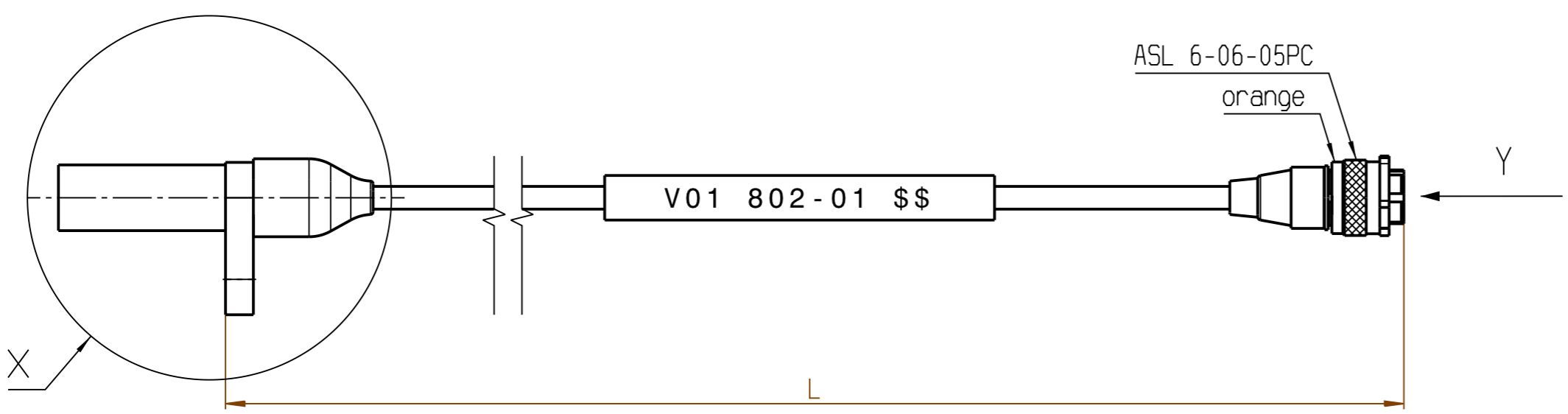


© Robert Bosch GmbH. Alle Rechte vorbehalten, auch bzgl. jeder Verfügung, Verwertung, Reproduktion, Bearbeitung, Weitergabe sowie für den Fall von Schutzrechtsanmeldungen.

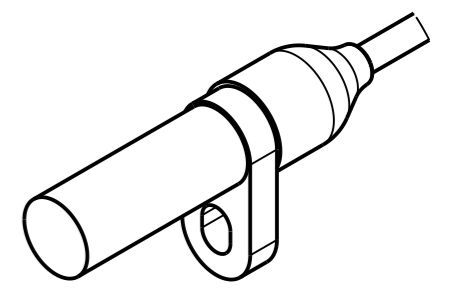
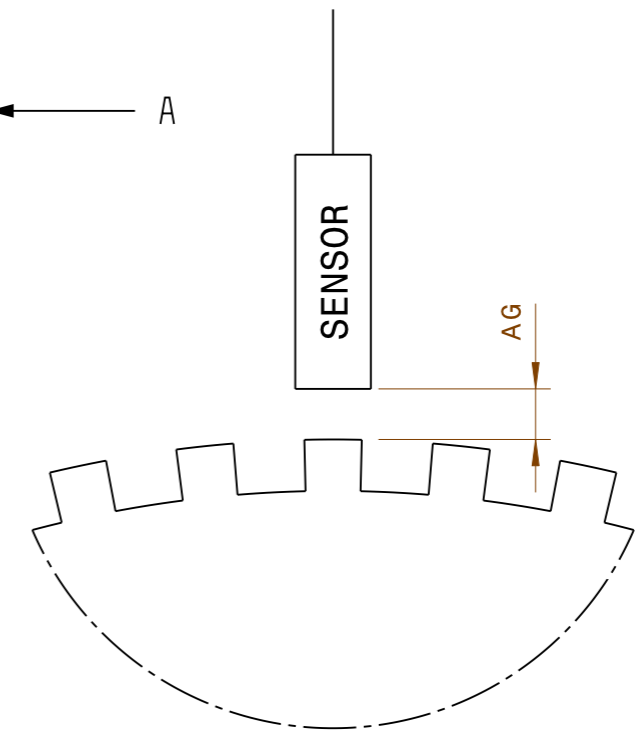
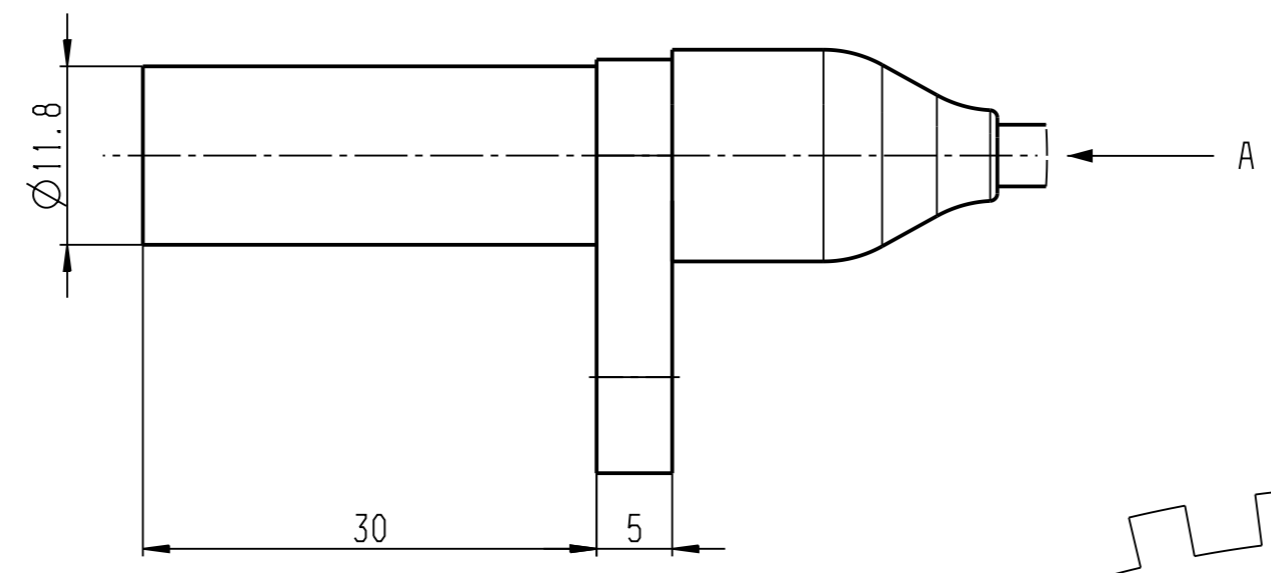
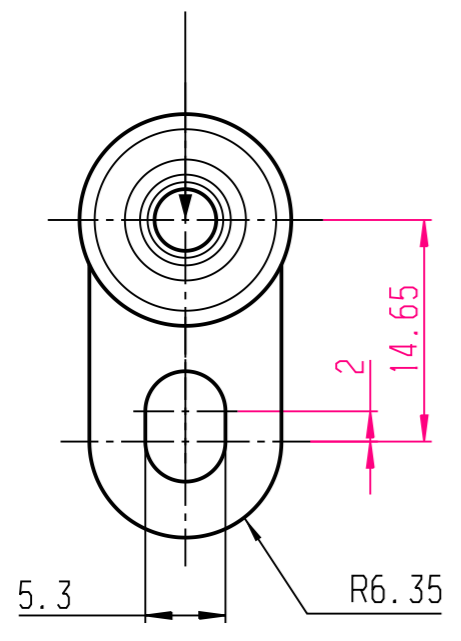
© Robert Bosch GmbH. All rights reserved, also regarding any disposal, exploitation, reproduction, editing, distribution, as well as in the event of applications for industrial property rights.



- ASL 6-06-05PC
- 1: Supply
 - 2: Ground
 - 3: Signal
 - 4: Not connected
 - 5: Not connected

Drehrichtung des Gebirrades
Direction of rotation of the target wheel

X: 2:1

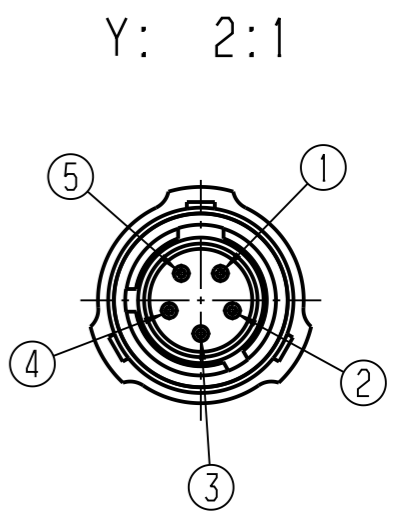
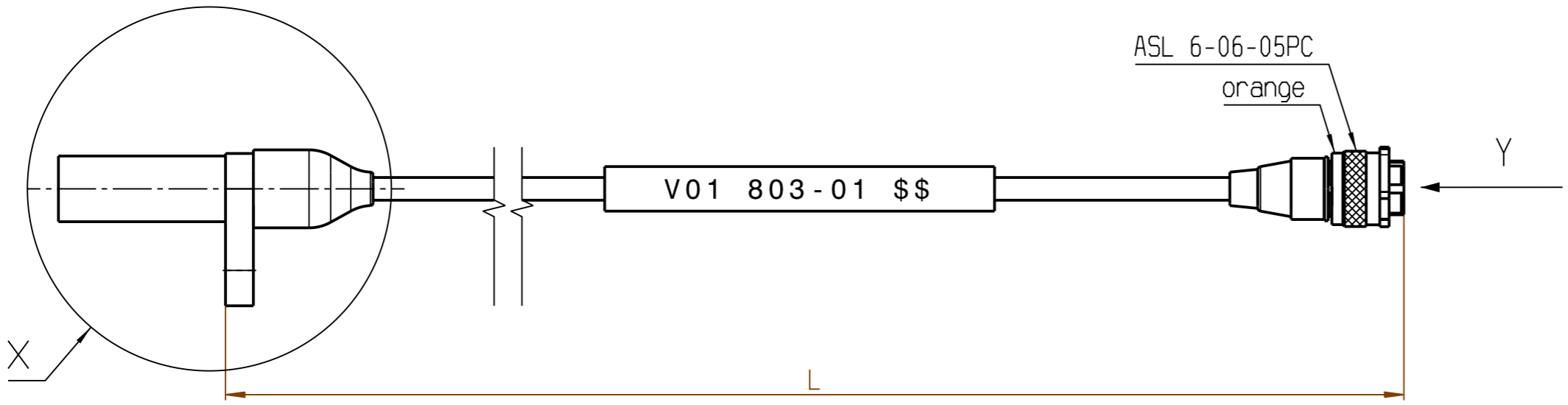


general tolerances for/Allgemeintoleranzen fuer		
lin. dim./L.masse	radii/Radien	angles/Winkel
± 0.5	± 0.5	± 1°
size acc. to/Masse nach		
ISO 14405-1:2010-12		
envelope principle / Huellprinzip		(E)

01 Erstellung	20131125	MzR	SqW	6720	BEG/MSD4
Ind. Change/Aend.	YYYYMMDD	Drawn/Gez.	Checked/Gepr.	Releas./Freig.	BWN Resp. dept./Verantw. Abt.
Lang./Spr.	Syst.	Wght./Gew.	Rot.-Speed Sensor HA-Di 0		
en/de	CAT	--	Drehzahlgeber HA-Di 0		
Scale/M.stab		OFFER DRAWING		Doc. type	DP/TD
1:1		ANGEBOTSZEICHN.		AGZ F 02U V01 802-01	Ind. Format
MNR --		Repl. for.		Repl. by.	
F 02U V01 802-01	150 ... 1000	0.4 ... 1.0	ASL 6-06-05PC	Sheet/Bl. 1/1	
Bestell-Nummer	Länge L (mm)	Luftspalt AG (mm)	Stecker	Ind. Format	
Order number	Length L (mm)	Air Gap AG (mm)	Connector	A3	

© Robert Bosch GmbH. Alle Rechte vorbehalten, auch bzgl. jeder Verfügung, Verwertung, Reproduktion, Bearbeitung, Weitergabe sowie für den Fall von Schutzrechtsanmeldungen.

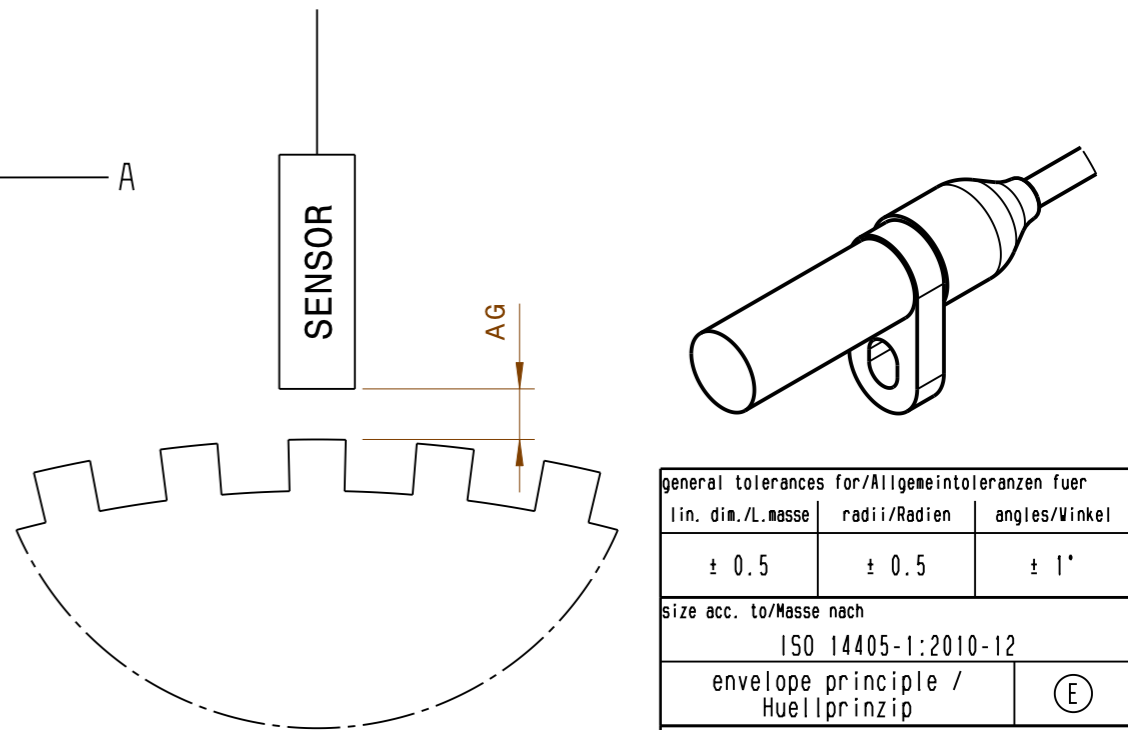
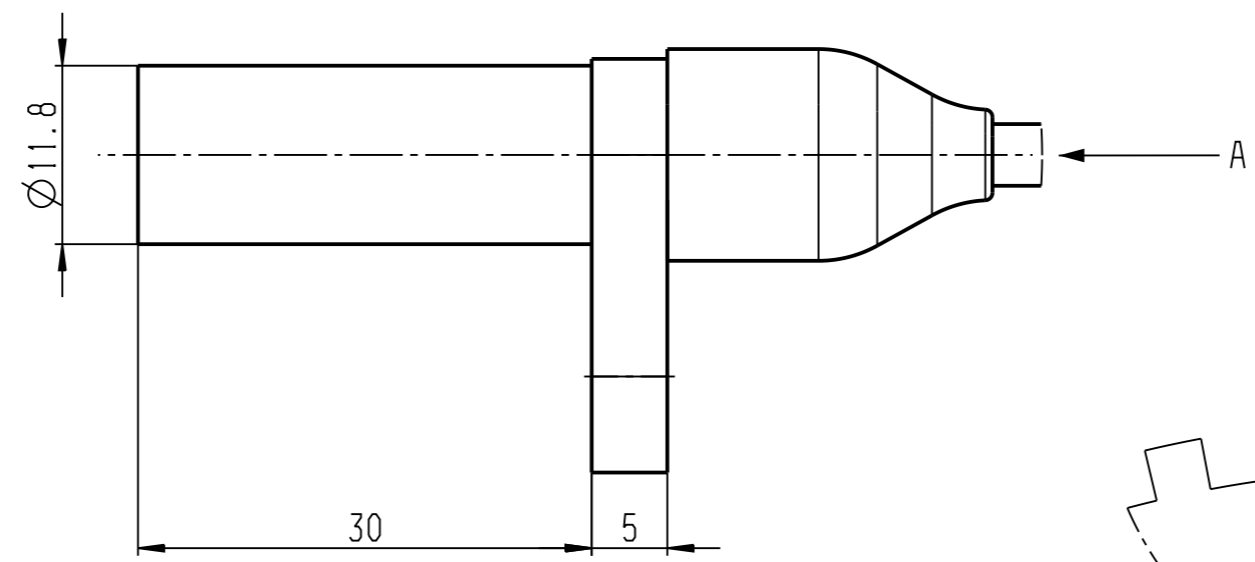
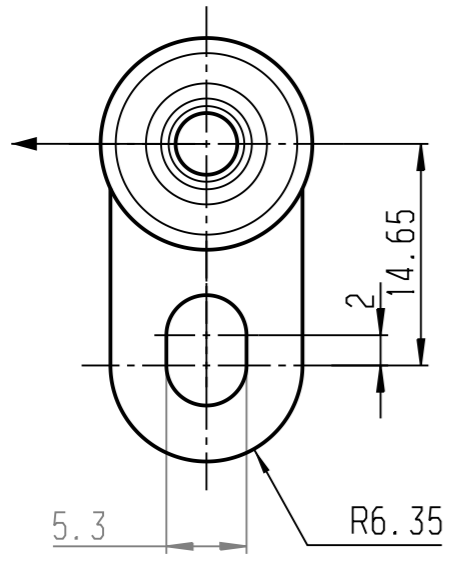
© Robert Bosch GmbH. All rights reserved, also regarding any disposal, exploitation, reproduction, editing, distribution, as well as in the event of applications for industrial property rights.



- ASL 6-06-05PC
- 1: Supply
 - 2: Ground
 - 3: Signal
 - 4: Not connected
 - 5: Not connected

Drehrichtung des Geberrades
Direction of rotation of the target wheel

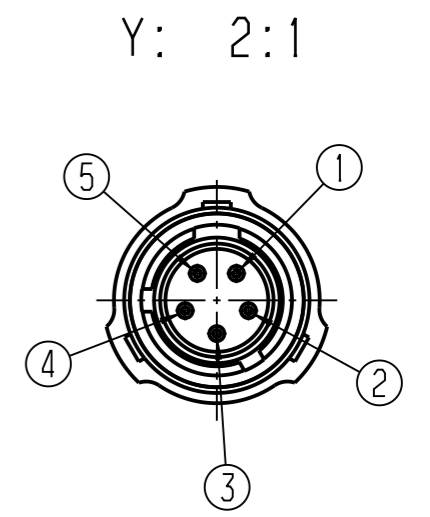
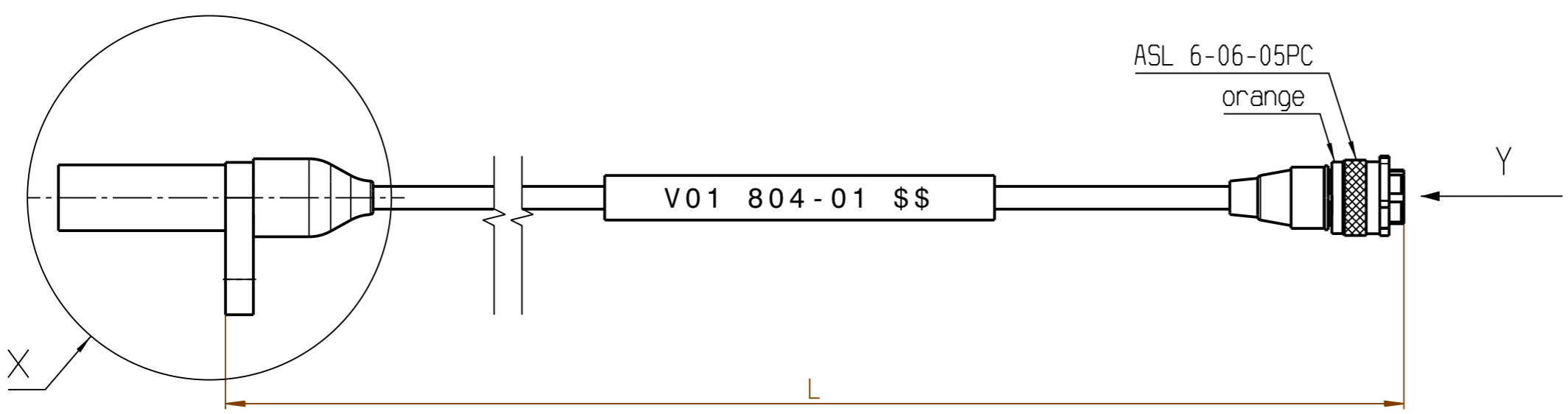
X: 2:1



general tolerances for/Allgemeintoleranzen fuer		
lin. dim./L.masse	radii/Radien	angles/Winkel
± 0.5	± 0.5	± 1°
size acc. to/Masse nach		
ISO 14405-1:2010-12		
envelope principle / Huellprinzip		(E)

01 Erstellung	20131125	MzR	6720	BEG/MSD4
Ind.	Change/Aend.	YYYYMMDD	Drawn/Gez.	Checked/Gepr.
Lang./Spr.	Syst.	Wght./Gew.	Rot.-Speed Sensor HA-Di90	
en/de	CAT	--	Drehzahlgeber HA-Di90	
Scale/M.stab		OFFER DRAWING		Doc. type
1:1		ANGEBOTSZEICHN.		AGZ F 02U V01 803-01
MNR	--	Repl. for.		Repl. by.
F 02U V01 803-01	150 ... 1000	0.4 ... 1.0	ASL 6-06-05PC	Sheet/Bl.
Bestell-Nummer	Länge L (mm)	Luftspalt AG (mm)	Stecker	1/1
Order number	Length L (mm)	Air Gap AG (mm)	Connector	Format
				A3

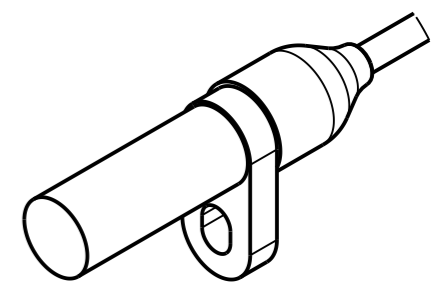
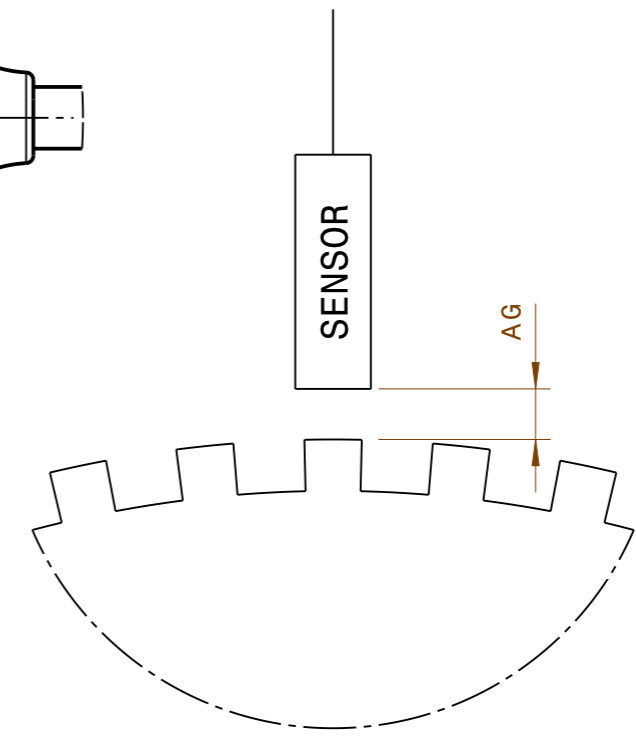
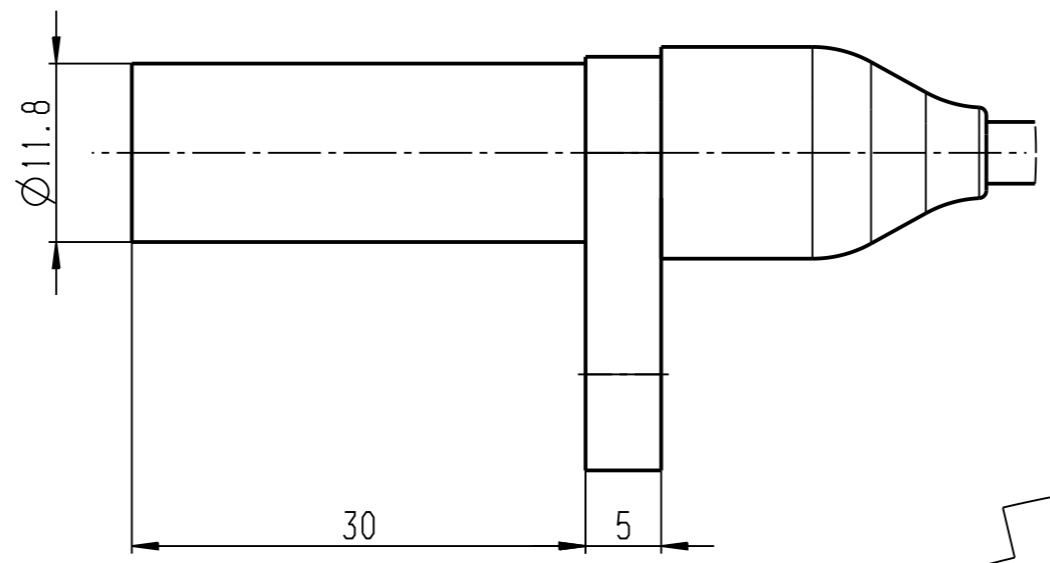
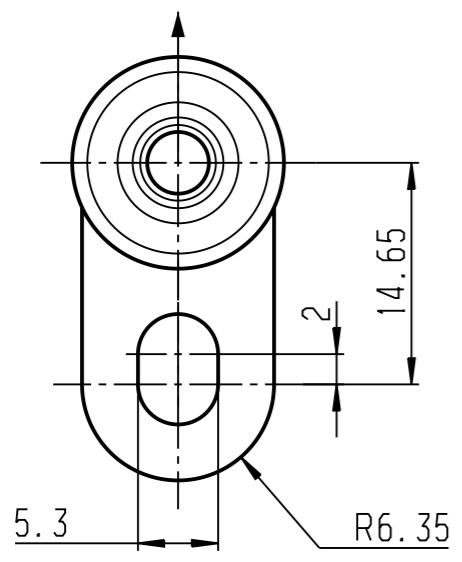
© Robert Bosch GmbH. All rights reserved, also regarding any disposal, exploitation, reproduction, editing, distribution, as well as in the event of applications for industrial property rights.



- ASL 6-06-05PC
- 1: Supply
 - 2: Ground
 - 3: Signal
 - 4: Not connected
 - 5: Not connected

Drehrichtung des Geberrades
 Direction of rotation of the target wheel

X: 2:1

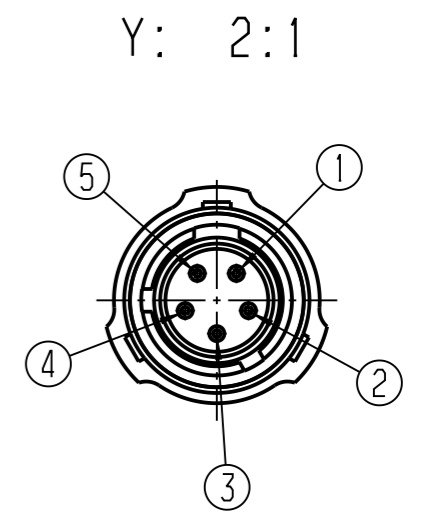
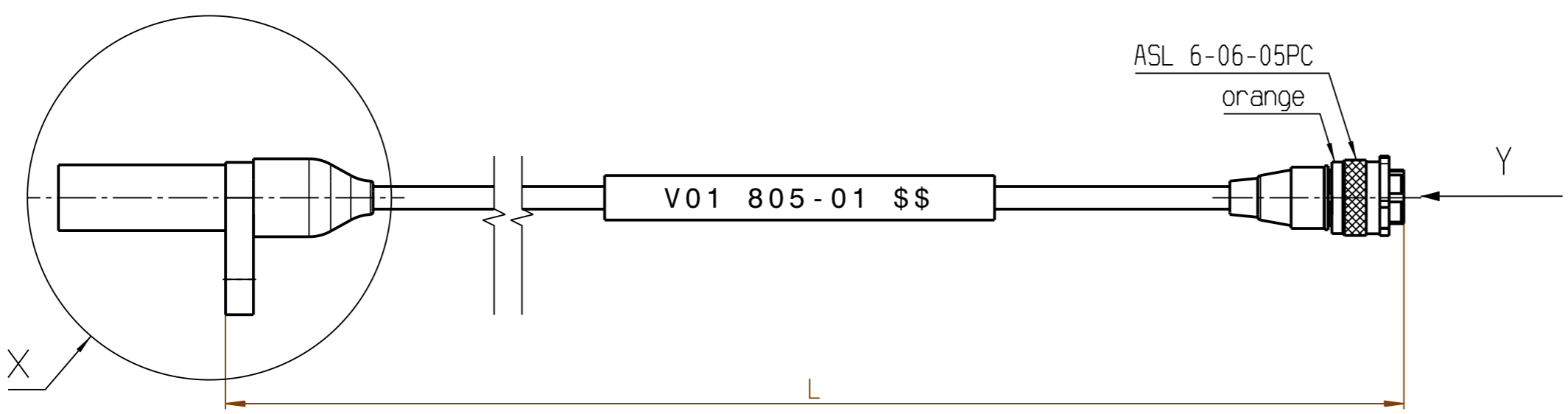


general tolerances for/Allgemeintoleranzen fuer		
lin. dim./L.masse	radii/Radien	angles/Winkel
± 0.5	± 0.5	± 1°
size acc. to/Masse nach		
ISO 14405-1:2010-12		
envelope principle / Huellprinzip		(E)

01 Erstellung	20131125	MzR	6720	BEG/MSD4
Ind.	Change/Aend.	YYYYMMDD	Drawn/Gez.	Checked/Gepr.
Lang./Spr.	Syst.	Wght./Gew.	Rot.-Speed Sensor HA-Di 180	
en/de	CAT	--	Drehzahlgeber HA-Di180	
Scale/M.stab		1:1	Doc. type	
MNR		--	AGZ F 02U V01 804-01	
F 02U V01 804-01	150 ... 1000	0.4 ... 1.0	ASL 6-06-05PC	Sheet/Bl.
Bestell-Nummer	Länge L (mm)	Luftspalt AG (mm)	Stecker	1/1
Order number	Length L (mm)	Air Gap AG (mm)	Connector	Format
				A3

Ind.	Change/Aend.	YYYYMMDD	Drawn/Gez.	Checked/Gepr.	Releas./Freig.	BWN	Resp. dept./Verantw. Abt.	Add. info./Zus. Info.
Lang./Spr.	Syst.	Wght./Gew.	OFFER DRAWING		DP/TD		Ind.	Format
en/de	CAT	--	ANGEBOTSZEICHN.		AGZ F 02U V01 804-01		.	A3
MNR	--	1:1	Repl. for.		Repl. by.			

© Robert Bosch GmbH. All rights reserved, also regarding any disposal, exploitation, reproduction, editing, distribution, as well as in the event of applications for industrial property rights.



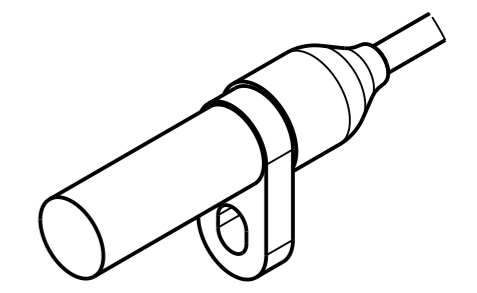
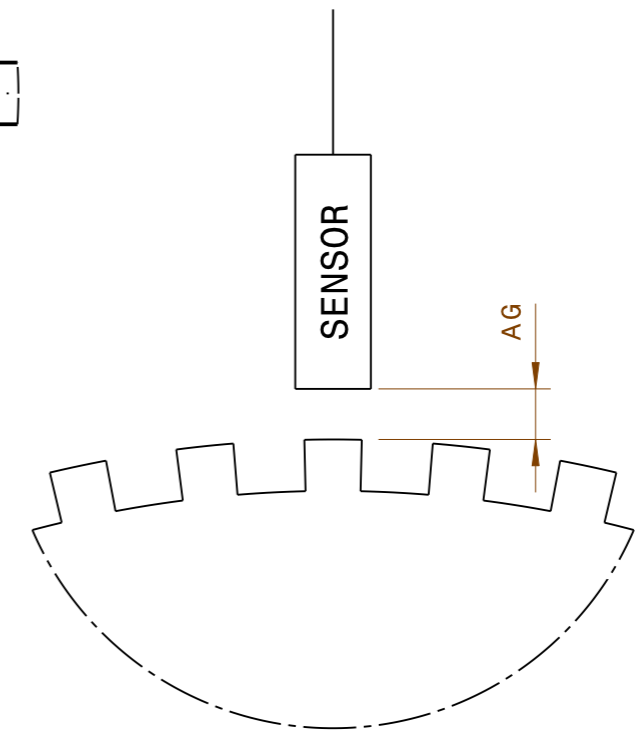
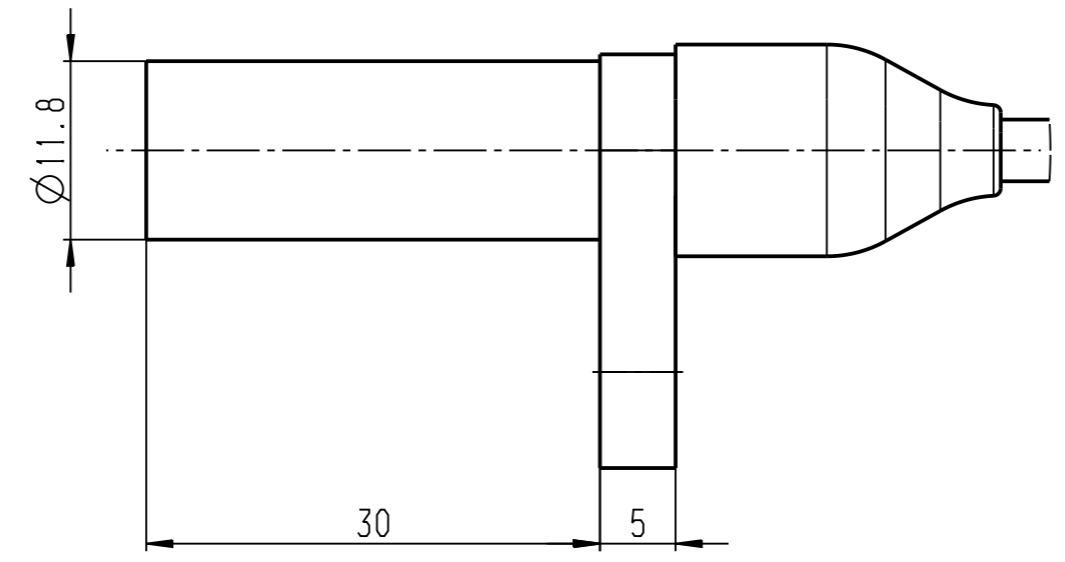
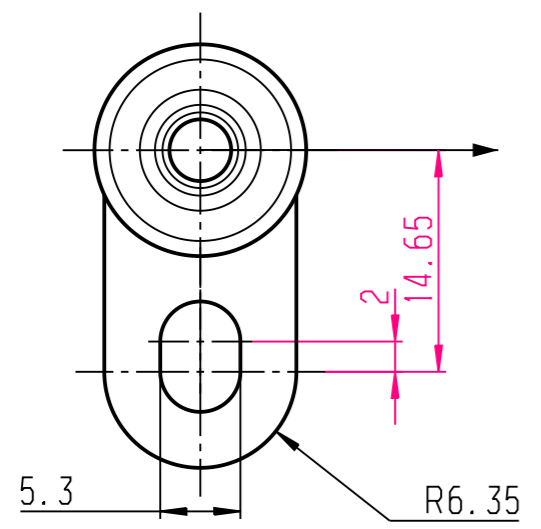
Y: 2:1

ASL 6-06-05PC

- 1: Supply
- 2: Ground
- 3: Signal
- 4: Not connected
- 5: Not connected

Drehrichtung des Geberrades
 Direction of rotation of the target wheel

X: 2:1



general tolerances for/Allgemeintoleranzen fuer		
lin. dim./L.masse	radii/Radien	angles/Winkel
± 0.5	± 0.5	± 1°
size acc. to/Masse nach		
ISO 14405-1:2010-12		
envelope principle / Huellprinzip		(E)

01 Erstellung	20131125	MzR	6720	BEG/MSD4
Ind.	Change/Aend.	YYYYMMDD	Drawn/Gez.	Checked/Gepr.
Lang./Spr.	Syst.	Wght./Gew.	Rot.-Speed Sensor HA-Di270	
en/de	CAT	--	Drehzahlgeber HA-Di270	
Scale/M.stab		1:1	Doc. type	
MNR		--	AGZ F 02U V01 805-01	
F 02U V01 805-01		150 ... 1000	0.4 ... 1.0	ASL 6-06-05PC
Bestell-Nummer	Länge L (mm)	Luftspalt AG (mm)	Stecker	
Order number	Length L (mm)	Air Gap AG (mm)	Connector	

6720	BEG/MSD4	Resp. dept./Verantw. Abt.	6720	BEG/MSD4
Ind.	Change/Aend.	YYYYMMDD	Drawn/Gez.	Checked/Gepr.
Lang./Spr.	Syst.	Wght./Gew.	Rot.-Speed Sensor HA-Di270	
en/de	CAT	--	Drehzahlgeber HA-Di270	
Scale/M.stab		1:1	Doc. type	
MNR		--	AGZ F 02U V01 805-01	
F 02U V01 805-01		150 ... 1000	0.4 ... 1.0	ASL 6-06-05PC
Bestell-Nummer	Länge L (mm)	Luftspalt AG (mm)	Stecker	
Order number	Length L (mm)	Air Gap AG (mm)	Connector	