

Speed Sensor Hall-Effect HA-D 90



- ▶ Max. frequency: ≤ 10 kHz
- ▶ Air gap: 0.4 to 1.0 mm
- ▶ Bore diameter: 11.8 mm
- ▶ Max. vibration: $1,200 \text{ m/s}^2$ at 10 Hz to 2 kHz
- ▶ Weight w/o wire: 12 g

This sensor is designed for incremental measurement of rotational speed (e.g. camshaft*, crankshaft or wheel speed), but it is not a “true power-on” sensor.

Due to the rotation of a ferromagnetic target wheel in front of the HA-D 90, the magnetic field is modulated at the place of the Hall probe.

The main feature and benefit of this sensor is a very good detection of the falling edge, due to a differential measuring method. This sensor is a combination of a high quality production part and robust design with a small housing.

*: see Installation Notes

Application

Application	Speed
Max. frequency	≤ 10 kHz
Target wheel air gap AG	0.4 to 1.0 mm
Temperature range	-40 to 150°C
Output circuit	Open collector for 1 kOhm
Output type	Active high
External magnetic fields	≤ 50 mT
Max. vibration	$1,200 \text{ m/s}^2$ at 10 Hz to 2 kHz

Technical Specifications

Mechanical Data

Weight w/o wire	12 g
Mounting	Screw 1 x M6
Bore diameter	11.8 mm
Installation depth L2	30 mm
Tightening torque	6 Nm

Electrical Data

Power supply	5 to 18 V
Current I _S	20 mA

Characteristic

Accuracy repeatability of the falling edge of tooth	$< 1.0\%$ (≤ 6 kHz)
	$< 1.5\%$ (≤ 10 kHz)
Signal output	0.52 V to U_s

Environment

Target wheel diameter D	162.34 mm
Thickness t	12.5 mm
Width of teeth b1	3.8 mm
Width of gap b2	4.7 mm
Width of sync. gap b3	20.79 mm
Depth of teeth h	3.4 mm
Number of teeth	60-2

Connectors and Wires

Connector	ASL606-05PC-HE
Mating connector	F02U.000.228-01
ASL006-05SC-HE	
Pin 1	U_s
Pin 2	Gnd
Pin 3	Sig
Pin 4	Nc
Pin 5	Nc
Various motorsport and automotive connectors available on request.	
Sleeve	DR-25
Wire size	AWG 24

Wire length L 15 to 100 cm
 Please specify the required wire length with your order.

Installation Notes

The HA-D 90 is no true-power-on sensor. It needs the falling edge of two teeth for correct working. After a time of 0.68 s without rotation of the detected wheel it needs again the falling edge of two teeth.

The HA-D 90 can be connected directly to most control units and data logging systems

Please specify the angle between the mounting and the target wheel.

Please avoid abrupt temperature changes.

For mounting please use only the integrated plug.

If a wheel with different dimensions is used (see Environment), the technical function has to be tested individually.

Please ensure that the environmental conditions do not exceed the sensor specifications.

Please find further application hints in the offer drawing at our homepage.

Safety Note

The sensor is not intended to be used for safety related applications without appropriate measures for signal validation in the application system.

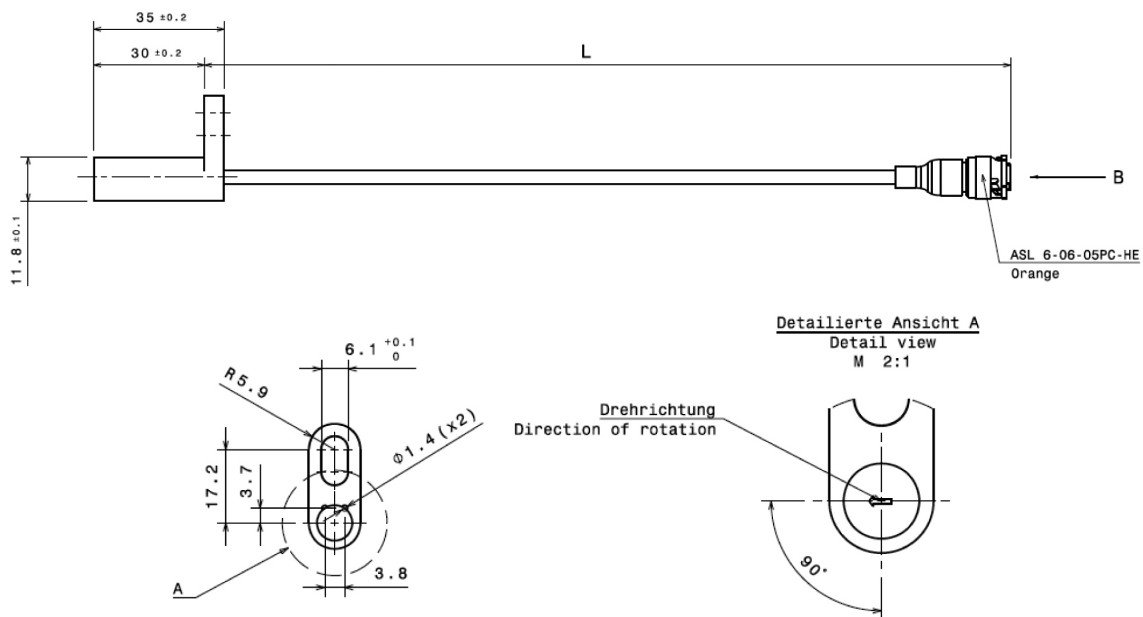
Legal Restrictions

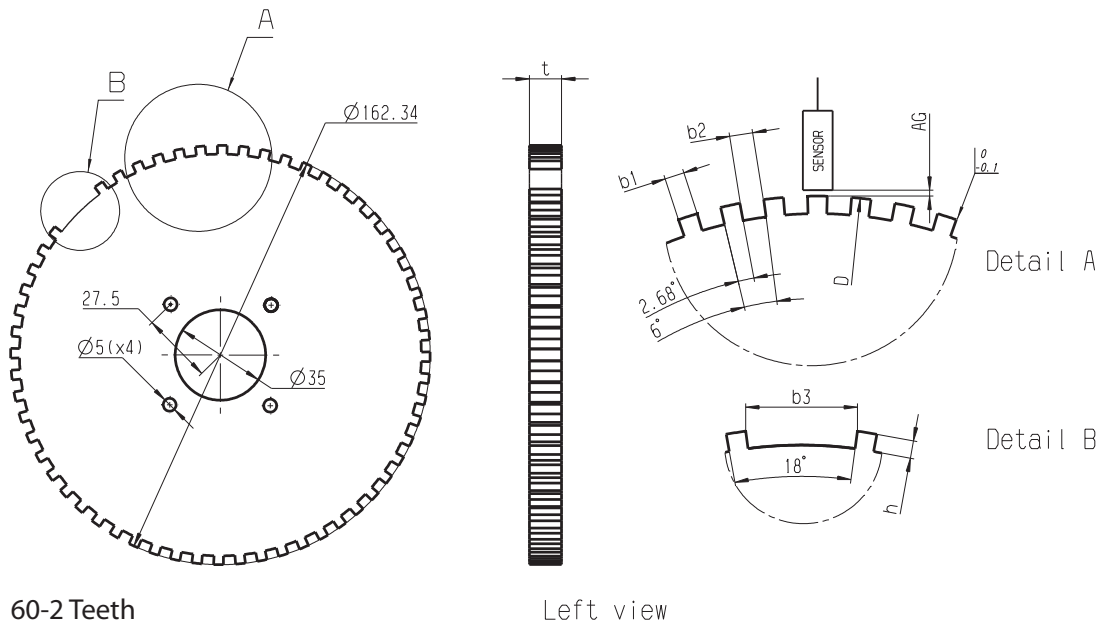
Generally blocked are direct and indirect business involving high risk destinations, including Russia, Belarus, Cuba, Iran, North Korea, Syria, Libya, Afghanistan, and certain non-governmental controlled Ukrainian regions. This list may change as geopolitics evolve.

Ordering Information

Speed Sensor Hall-Effect HA-D 90
 Order number **F02U.V00.334-01**

Dimensions





Represented by:

Europe:
 Bosch Engineering GmbH
 Motorsport
 Robert-Bosch-Allee 1
 74232 Abstatt
 Germany
 motorsport@bosch.com
 www.bosch-motorsport.de

North America:
 Bosch Engineering North America
 Motorsport
 38000 Hills Tech Drive
 Farmington Hills, MI 48331-3417
 United States of America
 motorsport@bosch.com
 www.bosch-motorsport.com

Asia-Pacific:
 Bosch Engineering Japan K.K.
 Motorsports Department
 1-9-32 Nakagawachuo, Tsuzuki-ku
 Yokohama-shi
 Kanagawa, 224-8601
 Japan
 motorsport@jp.bosch.com
 www.bosch-motorsport.jp

Australia, New Zealand and South Africa:
 Robert Bosch Pty. Ltd
 Motorsport
 1555 Centre Road
 Clayton, Victoria, 3168
 Australia
 motor.sport@au.bosch.com
 www.bosch-motorsport.com.au