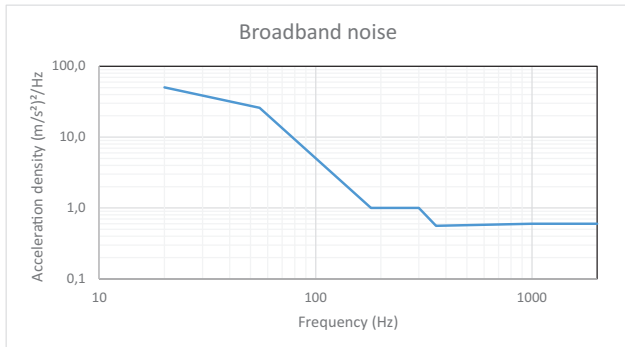


Vibration Profile 1

Broadband noise: 8h/direction

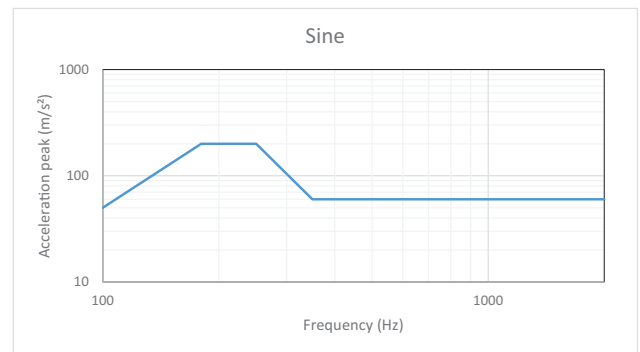
| Frequency (Hz) | Acceleration density (m/s ²) ² /Hz |
|----------------------------------|---|
| 20 | 50.4 |
| 55 | 26.0 |
| 180 | 1.0 |
| 300 | 1.0 |
| 360 | 0.56 |
| 1,000 | 0.6 |
| 2,000 | 0.6 |
| Effective value a _{Eff} | 55.4 m/s ² |



Sine: 8h/direction

Alteration rate of frequency: 2.4 oct./min

| Frequency (Hz) | Acceleration peak (m/s ²) |
|----------------|---------------------------------------|
| 100 | 50 |
| 180 | 200 |
| 250 | 200 |
| 350 | 60 |
| 2,000 | 60 |



Represented by:

Europe:
 Bosch Engineering GmbH
 Motorsport
 Robert-Bosch-Allee 1
 74232 Abstatt
 Germany
 Tel.: +49 7062 911 9101
 Fax: +49 7062 911 79104
 motorsport@bosch.com
 www.bosch-motorsport.de

North America:
 Bosch Engineering North America
 Motorsport
 38000 Hills Tech Drive
 Farmington Hills, MI 48331-3417
 United States of America
 Tel.: +1 248 876 2977
 Fax: +1 248 876 7373
 motorsport@bosch.com
 www.bosch-motorsport.com

Asia-Pacific:
 Bosch Engineering Japan K.K.
 Motorsport
 18F Queen's Tower C, 2-3-5 Minato
 Mirai Nishi-ku, Yokohama-shi
 Kanagawa 220-6218
 Japan
 Tel.: +81 45 650 5610
 Fax: +81 45 650 5611
 www.bosch-motorsport.jp

Australia, New Zealand and South Africa:
 Robert Bosch Pty. Ltd
 Motorsport
 1555 Centre Road
 Clayton, Victoria, 3168
 Australia
 Tel.: +61 (3) 9541 3901
 motor.sport@au.bosch.com