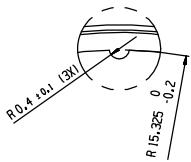


CUSTOMER INTERFACE INFORMATION
Information Kundenschnittstelle

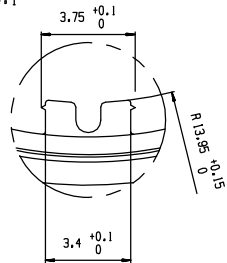
THE DESIGN OF THE SENSOR MOUNTING INTERFACE IS SHOWN AS AN EXAMPLE. THE SPECIFIED DIMENSIONS, ANGLES AND GEOMETRICAL TOLERANCES HAVE TO BE OBSERVED.

Die Ausführung der Montageschnittstelle ist hier als Beispiel gezeigt. Angegebene Abmessungen, Winkel und geometrische Toleranzen müssen überprüft werden.

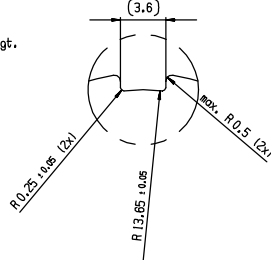
D 10:1



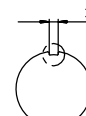
E 10:1



A 5:1

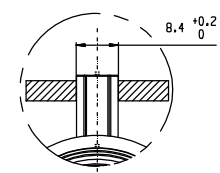


3.6

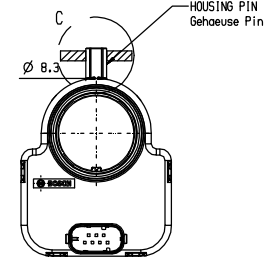


INTERFACE FOR BEARING OF HOUSING PIN
Verbindungspassung fuer Gehäuse Pin

C 2:1



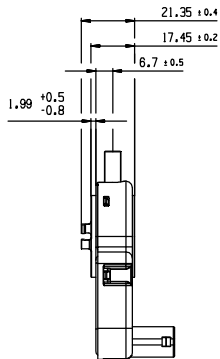
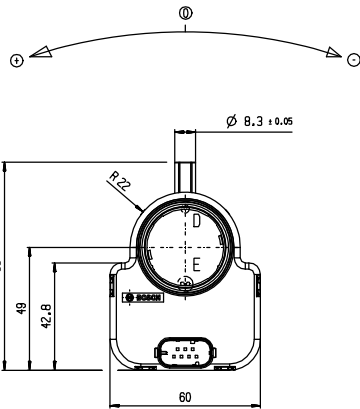
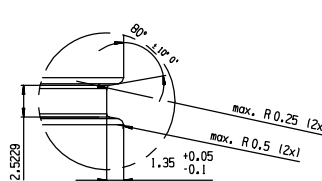
HOUSING PIN MUST NOT TOUCH ANY NEIGHBORING PARTS
Gehäuse Pin darf keine umliegenden Bauteile beruehren



SENSOR MOUNTING DIRECTION
Montagerichtung des Sensors

STEERING COLUMN
Lenksaeule

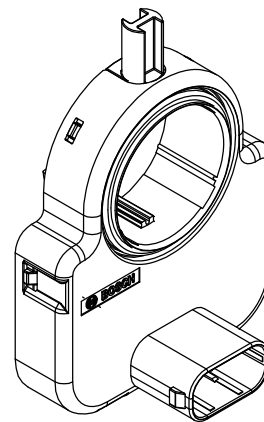
B 5:1



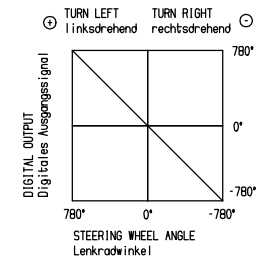
LABELING / Beschriftung
FRONT / Vorderseite



Back / Rueckseite



DEFINITION OF OUTPUT-SIGNAL ACCORDING ROTATION OF STEERING WHEEL
Ausgangssignal gemessn Lenkraddrehung



6	NON-EXISTENT / nicht vorhanden
5	NON-EXISTENT / nicht vorhanden
4	CAN LOW
3	CAN HIGH
2	SUPPLY 12V / Versorgung 12V
1	GROUND / MASSE
PIN-OUT Pinbelegung	
CONNECTOR: CAN 7-POLES	
general tolerances for all geometric tolerances for Allg. Abm. / allg. geometrische Toleranzen	
±0,5mm	±0,5mm
±0,1mm dimensions in alle Dimensionen in	mm
Site acc. to / Masse nach	
SU 14425-112010-12	
envelope for metric / Umhüllf. für metrisch	

ORDER NUMBER Bestellnummer	F 02U V02 894-01	
01 FORUM	20180719	dep:zob
ind. Change/Mod.	YYYYMMDD	Draw/Verz.
Lenz/Gepl.	High/Rev.	STY/Verf.
en/de	US	1 / 1
OFFER DRAWING / ANBOTSZEICHNUNG F 02U A02 894-01		